

ALPHA SKELETAL MUSCLE ACTIN RABBIT MAB

Cat.#: N262554

Product Name: Anti-alpha Skeletal Muscle Actin Rabbit Monoclonal Antibody

Synonyms: ACTA1; ACTA; Actin; alpha skeletal muscle; Alpha-actin-1

UNIPROT ID: P68133

Background: Actins are highly conserved proteins that are involved in various types of cell motility and are ubiquitously expressed in all eukaryotic cells.

Immunogen: A synthetic peptide of human muscle Actin

Applications: WB,IHC-F,IHC-P,ICC/IF,IP

Recommended Dilutions: WB: 1/500-1/1000 IHC: 1/50-1/100 IF: 1/50-1/200 IP: 1/20

Host Species: Rabbit

Clonality: Rabbit Monoclonal

Clone ID: R03-512

MW: Calculated MW: 42 kDa; Observed MW: 42 kDa

Isotype: IgG

Purification: Affinity Purified

Species Reactivity: Human,Rat

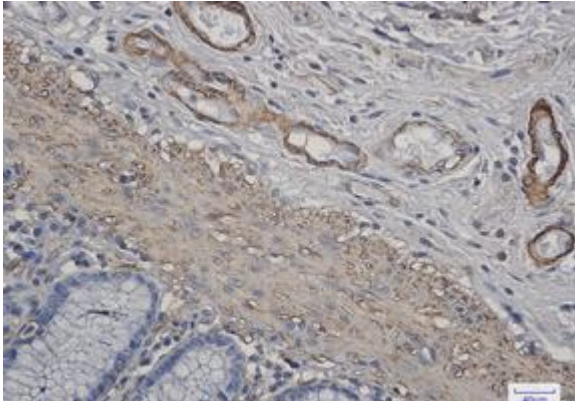
Conjugation: Unconjugated

Modification: Unmodified

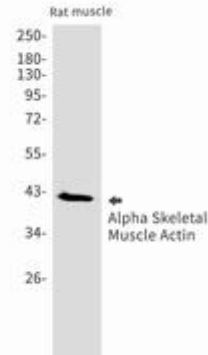
Constituents: PBS (without Mg²⁺ and Ca²⁺), pH 7.3 containing 50% glycerol, 0.5% BSA and 0.02% sodium azide

Research Areas: Signal Transduction

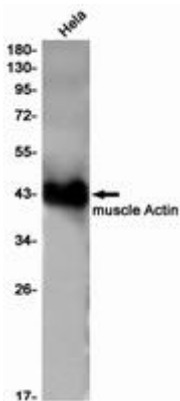
Storage & Shipping: Store at -20°C. Avoid repeated freezing and thawing



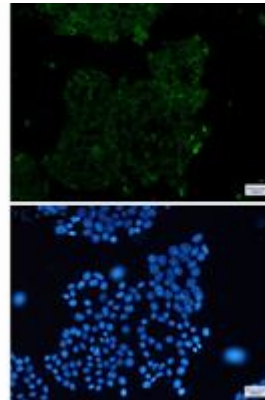
Immunohistochemistry analysis of paraffin-embedded Human colon cancer using muscle Actin antibody. High-pressure and temperature Sodium Citrate pH 6.0 was used for antigen retrieval.



Western blot analysis of Alpha Skeletal Muscle in rat muscle lysates using alpha Skeletal Muscle Actin antibody.



Western blot analysis of muscle Actin in Hela lysates using muscle Actin antibody.



Immunocytochemistry analysis of muscle Actin (green) in Hela using muscle Actin antibody, and DAPI (blue).