

## ALPHA SKELETAL MUSCLE ACTIN RABBIT MAB

**Cat.#:** N261745

**Product Name:** Anti-alpha Skeletal Muscle Actin Rabbit Monoclonal Antibody

**Synonyms:** ACTA1; ACTA; Actin; alpha skeletal muscle; Alpha-actin-1

**UNIPROT ID:** P68133

**Background:** Actins are highly conserved proteins that are involved in various types of cell motility and are ubiquitously expressed in all eukaryotic cells.

**Immunogen:** A synthetic peptide of human Actin

**Applications:** WB,IHC-P,IP

**Recommended Dilutions:** WB: 1/500-1/1000 IHC: 1/50-1/100 IP: 1/20

**Host Species:** Rabbit

**Clonality:** Rabbit Monoclonal

**Clone ID:** R07-8G7

**MW:** Calculated MW: 42 kDa; Observed MW: 42 kDa

**Isotype:** IgG

**Purification:** Affinity Purified

**Species Reactivity:** Human

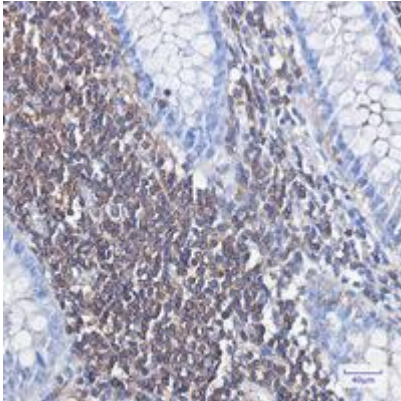
**Conjugation:** Unconjugated

**Modification:** Unmodified

**Constituents:** PBS (without Mg<sup>2+</sup> and Ca<sup>2+</sup>), pH 7.3 containing 50% glycerol, 0.5% BSA and 0.02% sodium azide

**Research Areas:** Signal Transduction

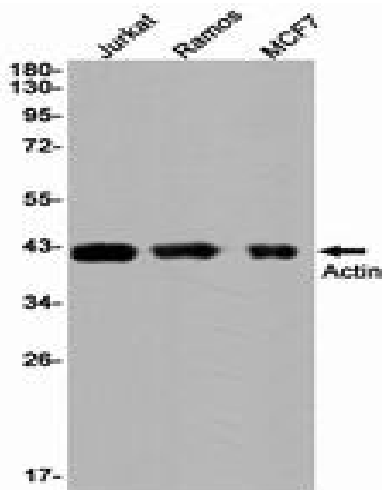
**Storage & Shipping:** Store at -20°C. Avoid repeated freezing and thawing



Immunohistochemistry analysis of paraffin-embedded Human colon cancer using Actin antibody. High-pressure and temperature Sodium Citrate pH 6.0 was used for antigen retrieval.



Western blot analysis of Actin in HeLa lysates using alpha Skeletal Muscle Actin antibody.



Western blot analysis of Actin in Jurkat, Ramos, MCF-7 lysates using Actin antibody.