

ALPHA TUBULIN (4C9) MOUSE MAB

Cat.#: N261207

Product Name: Anti-alpha Tubulin (4C9) Mouse Monoclonal Antibody

Synonyms: Tubulin alpha-1B chain; Alpha-tubulin ubiquitous; Tubulin K-alpha-1; Tubulin alpha-ubiquitous chain

UNIPROT ID: P68363

Background: TUBA1A Tubulin is the major constituent of microtubules. It binds two moles of GTP, one at an exchangeable site on the beta chain and one at a non-exchangeable site on the alpha-chain.

Immunogen: Recombinant Protein of Tubulin alpha-1A chain

Applications: WB,IHC-F,IHC-P,ICC/IF,IP

Recommended Dilutions: WB: 1/500-1/1000 IHC: 1/50-1/100 IF: 1/50-1/200 IP: 1/20

Host Species: Mouse

Clonality: Mouse Monoclonal

Clone ID: 4C9-6H6-4F7

MW: Calculated MW: 50 kDa; Observed MW: 50 kDa

Isotype: IgG1

Purification: Affinity Purified

Species Reactivity: Human,Rat,Mouse

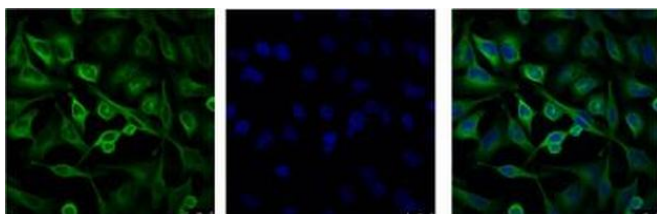
Conjugation: Unconjugated

Modification: Unmodified

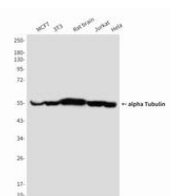
Constituents: PBS (without Mg²⁺ and Ca²⁺), pH 7.3 containing 50% glycerol, 0.5% BSA and 0.02% sodium azide

Research Areas: Signal Transduction

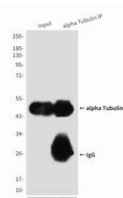
Storage & Shipping: Store at -20°C. Avoid repeated freezing and thawing



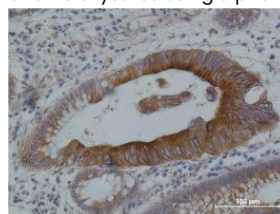
Immunofluorescence analysis of alpha Tubulin (4C9) in HeLa using alpha Tubulin (4C9) antibody (Left), and DAPI (blue).



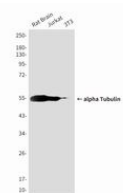
Western blot analysis of alpha Tubulin in MCF-7, 3T3, rat Brain, Jurkat and HeLa lysates using alpha tubulin antibody.



Immunoprecipitation analysis of alpha Tubulin in mouse Brain Tissue lysates using alpha Tubulin antibody.



Immunohistochemistry analysis of paraffin-embedded Human Colon carcinoma using alpha tubulin antibody. High-pressure and temperature Sodium Citrate pH 6.0 was used for antigen retrieval.



Western blot analysis of alpha Tubulin (4C9) in rat brain, Jurkat, 3T3 lysates using alpha Tubulin (4C9) antibody.