

## ALPHA TUBULIN RABBIT MAB

**Cat.#:** N261831

**Product Name:** Anti-alpha Tubulin Rabbit Monoclonal Antibody

**Synonyms:** ALS22; TUBA1; H2-ALPHA

**UNIPROT ID:** P68366

**Background:** TUBA1A Tubulin is the major constituent of microtubules. It binds two moles of GTP, one at an exchangeable site on the beta chain and one at a non-exchangeable site on the alpha-chain.

**Immunogen:** A synthetic peptide of human alpha Tubulin

**Applications:** WB,IHC-F,IHC-P,ICC/IF,IP

**Recommended Dilutions:** WB: 1/500-1/1000 IHC: 1/50-1/100 IF: 1/50-1/200 IP: 1/20

**Host Species:** Rabbit

**Clonality:** Rabbit Monoclonal

**Clone ID:** R02-2H3

**MW:** Calculated MW: 50 kDa; Observed MW: 50 kDa

**Isotype:** IgG

**Purification:** Affinity Purified

**Species Reactivity:** Human,Mouse,Rat,Hamster

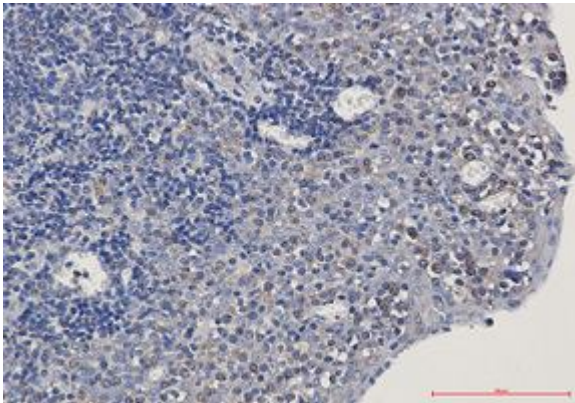
**Conjugation:** Unconjugated

**Modification:** Unmodified

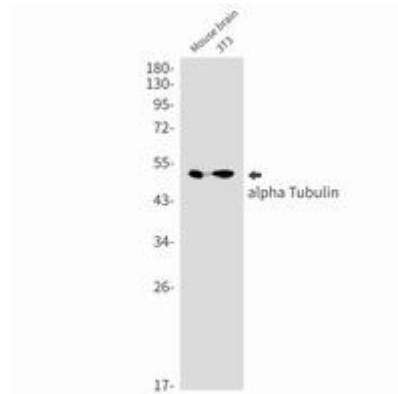
**Constituents:** PBS (without Mg<sup>2+</sup> and Ca<sup>2+</sup>), pH 7.3 containing 50% glycerol, 0.5% BSA and 0.02% sodium azide

**Research Areas:** Signal Transduction

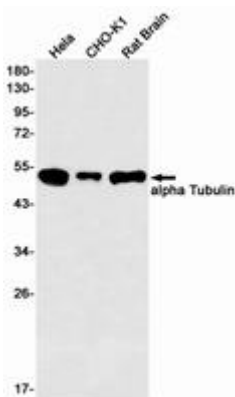
**Storage & Shipping:** Store at -20°C. Avoid repeated freezing and thawing



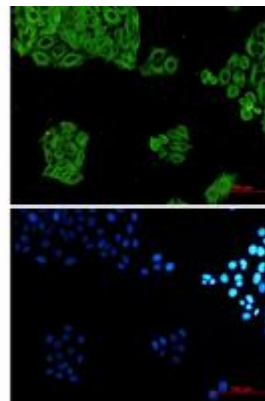
Immunohistochemistry analysis of paraffin-embedded Human tonsil using alpha Tubulin antibody. High-pressure and temperature Sodium Citrate pH 6.0 was used for antigen retrieval.



Western blot analysis of alpha Tubulin in mouse brain, 3T3 lysates using alpha Tubulin antibody.



Western blot analysis of alpha Tubulin in HeLa, CHO-K1, rat Brain lysates using alpha Tubulin antibody.



Immunocytochemistry analysis of alpha Tubulin (green) in HeLa using alpha Tubulin antibody, and DAPI (blue).