

## ALPK1 RABBIT PAB

**Cat.#:** N225155

**Product Name:** Anti-ALPK1 Rabbit pAb

**Synonyms:** ALPK1; KIAA1527; LAK; Alpha-protein kinase 1; Chromosome 4 kinase; Lymphocyte alpha-protein kinase

**UNIPROT ID:** Q96QP1

**Background:** Serine/threonine-protein kinase that detects bacterial pathogen-associated molecular pattern metabolites (PAMPs) and initiates an innate immune response, a critical step for pathogen elimination and engagement of adaptive immunity.

**Immunogen:** The antiserum was produced against synthesized peptide derived from human ALPK1. AA range:11-60

**Applications:** WB,IHC-F,IHC-P,ICC/IF,ELISA

**Recommended Dilutions:** WB: 1/500-1/1000 IHC: 1/50-1/100 IF: 1/50-1/200 ELISA: 1/10000

**Host Species:** Rabbit

**Clonality:** Rabbit Polyclonal

**Clone ID:** -

**MW:** Calculated MW: 139 kDa; Observed MW: 139 kDa

**Isotype:** IgG

**Purification:** Affinity Purified

**Species Reactivity:** Human,Mouse

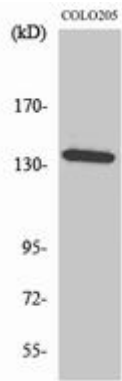
**Conjugation:** Unconjugated

**Modification:** Unmodified

**Constituents:** PBS (without Mg<sup>2+</sup> and Ca<sup>2+</sup>), pH 7.3 containing 50% glycerol, 0.5% BSA and 0.02% sodium azide

**Research Areas:** Signal Transduction

**Storage & Shipping:** Store at -20°C. Avoid repeated freezing and thawing



Western blot analysis of ALPK1 in various lysates using ALPK1 antibody.