

ALPK2 RABBIT PAB

Cat.#: S221382

Product Name: Anti-ALPK2 Rabbit Polyclonal Antibody

Synonyms: HAK

UNIPROT ID: Q86TB3 (Gene Accession - NP_443179)

Background: Predicted to enable ATP binding activity; protein serine kinase activity; and protein serine/threonine kinase activity. Involved in several processes, including epicardium morphogenesis; heart development; and negative regulation of Wnt signaling pathway involved in heart development. Acts upstream of or within regulation of gene expression. Colocalizes with basolateral plasma membrane. [provided by Alliance of Genome Resources, Apr 2022]

Immunogen: Synthetic peptide of human ALPK2

Applications: ELISA, IHC

Recommended Dilutions: IHC: 50-100; ELISA: 5000-10000

Host Species: Rabbit

Clonality: Rabbit Polyclonal

Isotype: Immunogen-specific rabbit IgG

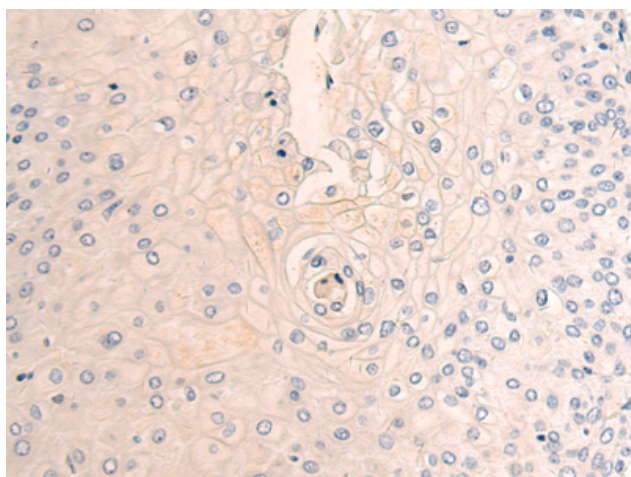
Purification: Antigen affinity purification

Species Reactivity: Human

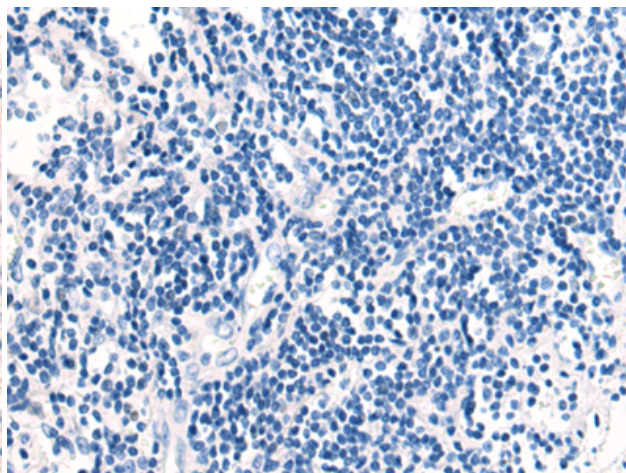
Constituents: PBS (without Mg²⁺ and Ca²⁺), pH 7.4, 150 mM NaCl, 0.05% Sodium Azide and 40% glycerol

Research Areas: Signal Transduction

Storage & Shipping: Store at -20°C. Avoid repeated freezing and thawing



Immunohistochemistry analysis of paraffin embedded Human esophagus cancer tissue using 221382(ALPK2 Antibody) at a dilution of 1/70(Cytoplasm).



In comparison with the IHC on the left, the same paraffin-embedded Human esophagus cancer tissue is first treated with the synthetic peptide and then with 221382(Anti-ALPK2 Antibody) at dilution 1/70.