

ALS2CL RABBIT PAB

Cat.#: S215146

Product Name: Anti-ALS2CL Rabbit Polyclonal Antibody

Synonyms: RN49018

UNIPROT ID: Q60I27 (Gene Accession - NP_001177636)

Background: Mutations in the ALS2 gene result in a number of juvenile recessive motor neuron diseases (MNDs), including juvenile primary lateral sclerosis (JPLS), a recessive form of amyotrophic lateral sclerosis (ALS2), infantile onset ascending hereditary spastic paralysis (IAHSP) and a form of complicated hereditary spastic paraplegia (CHSP). The ALS2 gene encodes the Alsin protein. Alsin acts as a guanine nucleotide exchange factor for Rab5, a modulator of the endocytic pathway. Alsin is a cytosolic protein, which is associated with small, punctate membrane structures. Therefore Alsin may mediate membrane transport events, potentially linking endocytic processes and actin cytoskeleton remodeling. The ALS2 C-terminal like protein (ALS2CL) also modulates Rab5 activity.

Immunogen: Synthetic peptide of human ALS2CL

Applications: ELISA, IHC

Recommended Dilutions: IHC: 25-100; ELISA: 2000-5000

Host Species: Rabbit

Clonality: Rabbit Polyclonal

Isotype: Immunogen-specific rabbit IgG

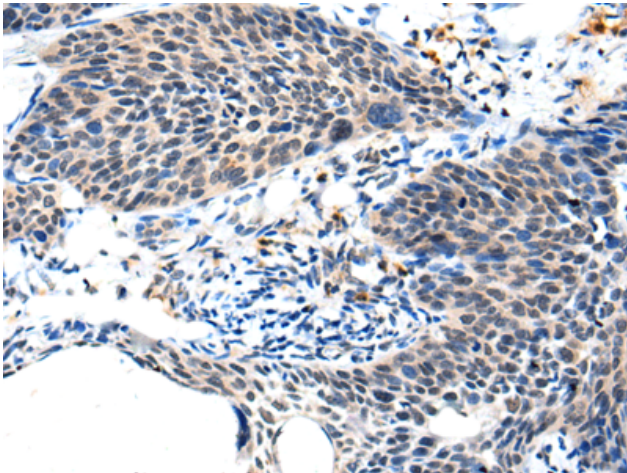
Purification: Antigen affinity purification

Species Reactivity: Human, Mouse

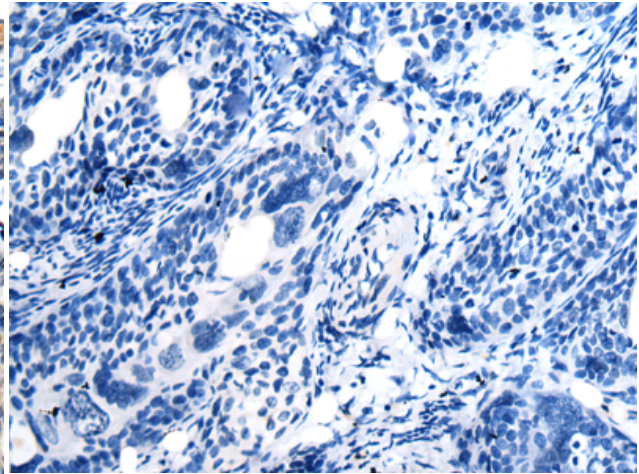
Constituents: PBS (without Mg²⁺ and Ca²⁺), pH 7.4, 150 mM NaCl, 0.05% Sodium Azide and 40% glycerol

Research Areas: Signal Transduction

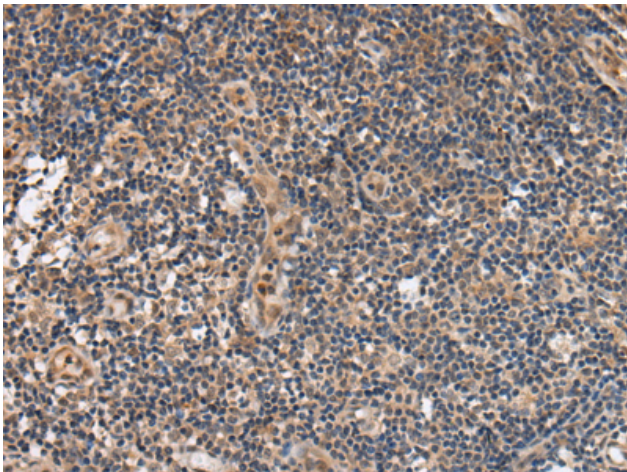
Storage & Shipping: Store at -20°C. Avoid repeated freezing and thawing



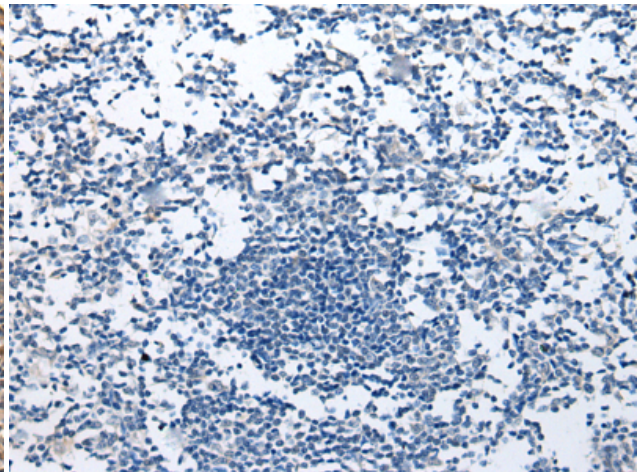
Immunohistochemistry analysis of paraffin embedded Human cervical cancer tissue using 215146(ALS2CL Antibody) at a dilution of 1/20(Cytoplasm).



In comparison with the IHC on the left, the same paraffin-embedded Human cervical cancer tissue is first treated with the synthetic peptide and then with 215146(Anti-ALS2CL Antibody) at dilution 1/20.



The image on the left is immunohistochemistry of paraffin-embedded Human tonsil tissue using 215146(Anti-ALS2CL Antibody) at a dilution of 1/20.



In comparison with the IHC on the left, the same paraffin-embedded Human tonsil tissue is first treated with synthetic peptide and then with D162947(Anti-ALS2CL Antibody) at dilution 1/20.