

AMIGO2 RABBIT PAB

Cat.#: S216996

Product Name: Anti-AMIGO2 Rabbit Polyclonal Antibody

Synonyms: ALII; DEGA; AMIGO-2

UNIPROT ID: Q86SJ2 (Gene Accession - BC047595)

Background: Predicted to be involved in several processes, including heterophilic cell-cell adhesion via plasma membrane cell adhesion molecules; homophilic cell adhesion via plasma membrane adhesion molecules; and negative regulation of programmed cell death. Predicted to act upstream of or within positive regulation of synapse assembly. Predicted to be located in nucleus and plasma membrane. Predicted to be integral component of membrane. Biomarker of gastric adenocarcinoma.

Immunogen: Fusion protein of human AMIGO2

Applications: ELISA, WB, IHC

Recommended Dilutions: IHC: 50-200;WB: 500-2000;ELISA: 5000-10000

Host Species: Rabbit

Clonality: Rabbit Polyclonal

Isotype: Immunogen-specific rabbit IgG

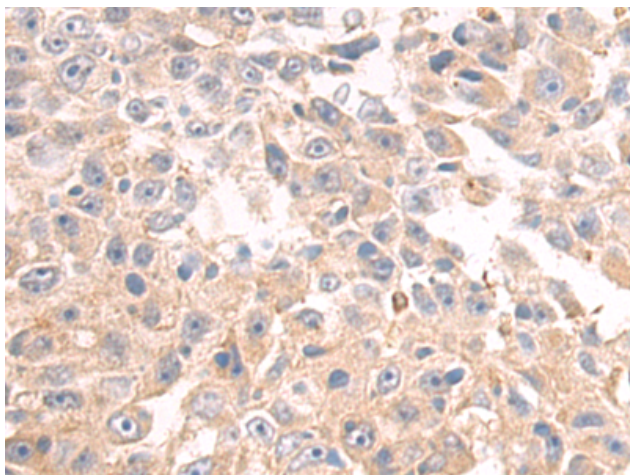
Purification: Antigen affinity purification

Species Reactivity: Human, Mouse, Rat

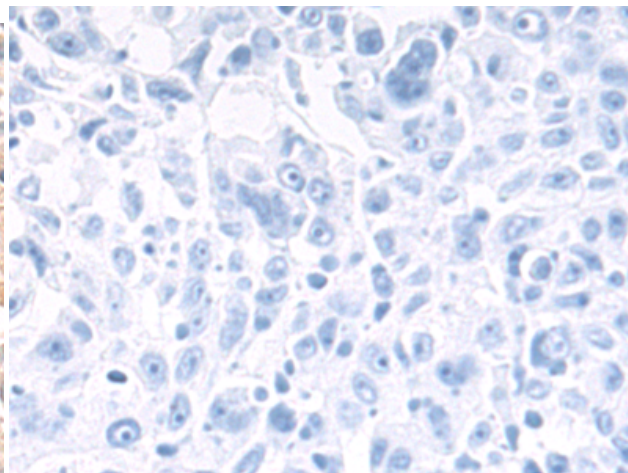
Constituents: PBS (without Mg²⁺ and Ca²⁺), pH 7.4, 150 mM NaCl, 0.05% Sodium Azide and 40% glycerol

Research Areas: Neuroscience

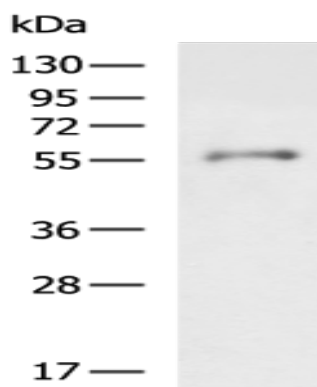
Storage & Shipping: Store at -20°C. Avoid repeated freezing and thawing



Immunohistochemistry analysis of paraffin embedded Human liver cancer tissue using 216996(AMIGO2 Antibody) at a dilution of 1/60(Cytoplasm).



In comparison with the IHC on the left, the same paraffin-embedded Human liver cancer tissue is first treated with the fusion protein and then with 216996(Anti-AMIGO2 Antibody) at dilution 1/60.



Gel: 8%SDS-PAGE, Lysate: 40 μ g;
Lane: SP20 cell lysate;
Primary antibody: 216996(AMIGO2 Antibody)
at dilution 1/800;
Secondary antibody: HRP-conjugated Goat
anti rabbit IgG at 1/5000 dilution;
Exposure time: 90 seconds