

AMOTL2 RABBIT PAB

Cat.#: S217001

Product Name: Anti-AMOTL2 Rabbit Polyclonal Antibody

Synonyms: LCCP

UNIPROT ID: Q9Y2J4 (Gene Accession - BC011454)

Background: Angiotensin is a protein that binds angiotensin, a circulating inhibitor of the formation of new blood vessels (angiogenesis). Angiotensin mediates angiotensin inhibition of endothelial cell migration and tube formation in vitro. The protein encoded by this gene is related to angiotensin and is a member of the motin protein family. Alternative splicing results in multiple transcript variants of this gene.

Immunogen: Fusion protein of human AMOTL2

Applications: ELISA, IHC

Recommended Dilutions: IHC: 25-100; ELISA: 2000-5000

Host Species: Rabbit

Clonality: Rabbit Polyclonal

Isotype: Immunogen-specific rabbit IgG

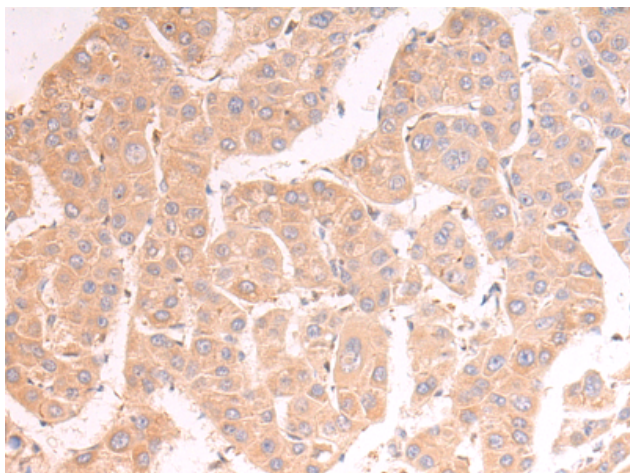
Purification: Antigen affinity purification

Species Reactivity: Human, Mouse, Rat

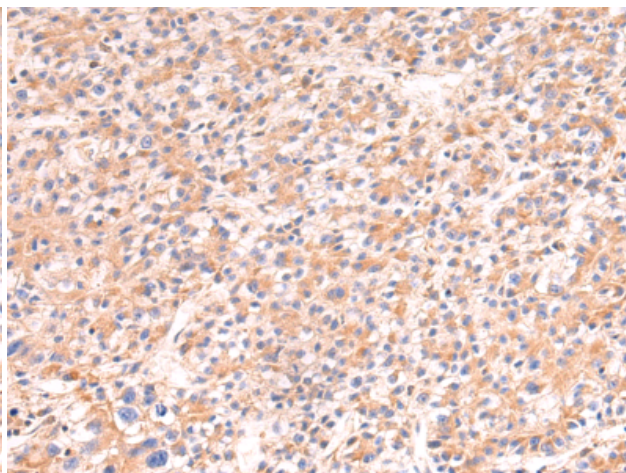
Constituents: PBS (without Mg²⁺ and Ca²⁺), pH 7.4, 150 mM NaCl, 0.05% Sodium Azide and 40% glycerol

Research Areas: Cell Biology

Storage & Shipping: Store at -20°C. Avoid repeated freezing and thawing



Immunohistochemistry analysis of paraffin-embedded Human liver cancer tissue using 217001(AMOTL2 Antibody) at a dilution of 1/20(Cytoplasm).



Immunohistochemistry analysis of paraffin-embedded Human prostate cancer tissue using 217001(Anti-AMOTL2 Antibody) at a dilution of 1/20.