

AMY2A RABBIT PAB

Cat.#: S217185

Product Name: Anti-AMY2A Rabbit Polyclonal Antibody

Synonyms: PA; AMY2; AMY2B

UNIPROT ID: P04746 (Gene Accession - BC007060)

Background: Amylases are secreted proteins that hydrolyze 1,4-alpha-glucoside bonds in oligosaccharides and polysaccharides, and thus catalyze the first step in digestion of dietary starch and glycogen. The human genome has a cluster of several amylase genes that are expressed at high levels in either salivary gland or pancreas. This gene encodes an amylase isoenzyme produced by the pancreas.

Immunogen: Fusion protein of human AMY2A

Applications: ELISA, WB, IHC

Recommended Dilutions: IHC: 50-200;WB: 1000-5000;ELISA: 2000-10000

Host Species: Rabbit

Clonality: Rabbit Polyclonal

Isotype: Immunogen-specific rabbit IgG

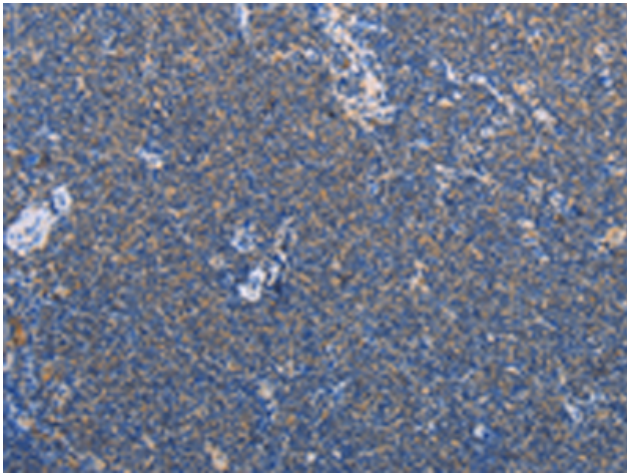
Purification: Antigen affinity purification

Species Reactivity: Human, Mouse

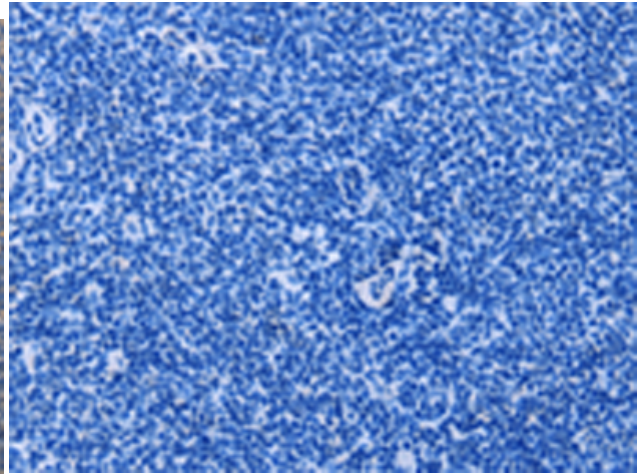
Constituents: PBS (without Mg²⁺ and Ca²⁺), pH 7.4, 150 mM NaCl, 0.05% Sodium Azide and 40% glycerol

Research Areas: Metabolism, Cancer

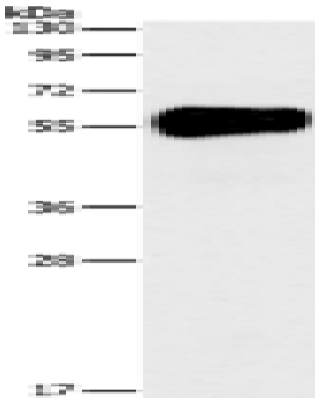
Storage & Shipping: Store at -20°C. Avoid repeated freezing and thawing



Immunohistochemistry analysis of paraffin embedded Human Lymphoma tissue using 217185 (AMY2A Antibody) at a dilution of 1/60 (Cytoplasm).



In comparison with the IHC on the left, the same paraffin-embedded Human Lymphoma tissue is first treated with the fusion protein and then with 217185 (Anti-AMY2A Antibody) at dilution 1/60.



Gel: 15% SDS-PAGE, Lysate: 40 μ g;
Lane: Mouse pancreas tissue;
Primary antibody: 217185 (AMY2A Antibody) at dilution 1/1550;
Secondary antibody: Goat anti rabbit IgG at 1/8000 dilution;
Exposure time: 1 second