

ANAPC1 RABBIT PAB

Cat.#: S220055

Product Name: Anti-ANAPC1 Rabbit Polyclonal Antibody

Synonyms: APC1; MCPR; TSG24

UNIPROT ID: Q9H1A4 (Gene Accession - NP_073153)

Background: This gene encodes a subunit of the anaphase-promoting complex. This complex is an E3 ubiquitin ligase that regulates progression through the metaphase to anaphase portion of the cell cycle by ubiquitinating proteins which targets them for degradation. Component of the anaphase promoting complex/cyclosome (APC/C), a cell cycle-regulated E3 ubiquitin ligase that controls progression through mitosis and the G1 phase of the cell cycle.

Immunogen: Synthetic peptide of human ANAPC1

Applications: ELISA, IHC

Recommended Dilutions: IHC: 15-50; ELISA: 1000-2000

Host Species: Rabbit

Clonality: Rabbit Polyclonal

Isotype: Immunogen-specific rabbit IgG

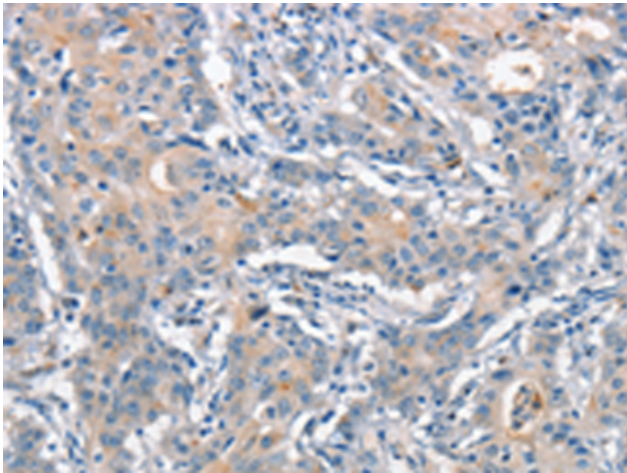
Purification: Antigen affinity purification

Species Reactivity: Human, Mouse

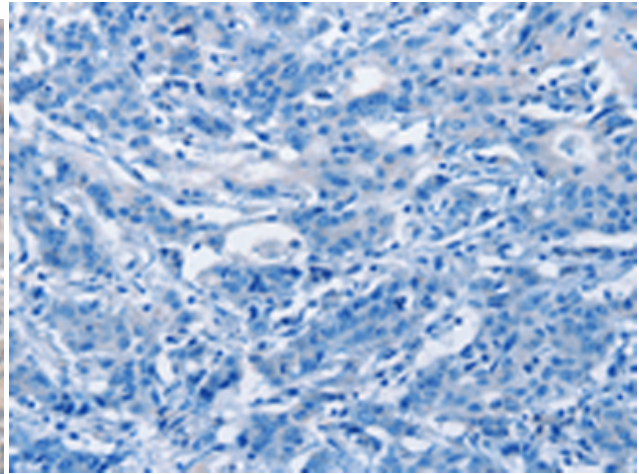
Constituents: PBS (without Mg²⁺ and Ca²⁺), pH 7.4, 150 mM NaCl, 0.05% Sodium Azide and 40% glycerol

Research Areas: Cell Biology

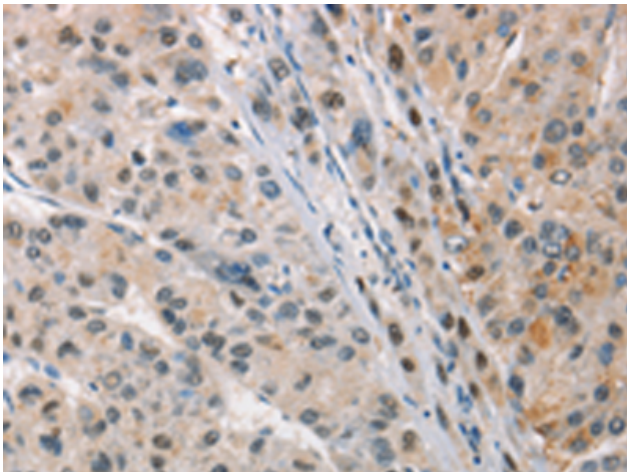
Storage & Shipping: Store at -20°C. Avoid repeated freezing and thawing



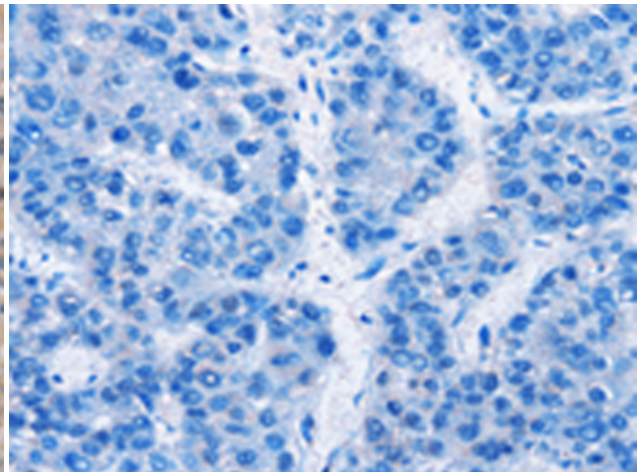
Immunohistochemistry analysis of paraffin embedded Human gastric cancer tissue using 220055 (ANAPC1 Antibody) at a dilution of 1/15 (Cytoplasm).



In comparison with the IHC on the left, the same paraffin-embedded Human gastric cancer tissue is first treated with the synthetic peptide and then with 220055 (Anti-ANAPC1 Antibody) at dilution 1/15.



The image on the left is immunohistochemistry of paraffin-embedded Human liver cancer tissue using 220055 (Anti-ANAPC1 Antibody) at a dilution of 1/15.



In comparison with the IHC on the left, the same paraffin-embedded Human liver cancer tissue is first treated with synthetic peptide and then with D260882 (Anti-ANAPC1 Antibody) at dilution 1/15.