

ANGIOTENSIN CONVERTING ENZYME 1 RABBIT MAB

Cat.#: N261842

Product Name: Anti-Angiotensin Converting Enzyme 1 Rabbit Monoclonal Antibody

Synonyms: ACE; Dipeptidyl carboxypeptidase I; Kininase II

UNIPROT ID: P09470

Background: Converts angiotensin I to angiotensin II by release of the terminal His-Leu, this results in an increase of the vasoconstrictor activity of angiotensin. Also able to inactivate bradykinin, a potent vasodilator. Has also a glycosidase activity which releases GPI-anchored proteins from the membrane by cleaving the mannose linkage in the GPI moiety. This GPIase activity seems to be crucial for the egg-binding ability of the sperm.

Immunogen: Recombinant protein of mouse Angiotensin Converting Enzyme 1

Applications: WB,IHC-P

Recommended Dilutions: WB: 1/500-1/1000 IHC: 1/50-1/100

Host Species: Rabbit

Clonality: Rabbit Monoclonal

Clone ID: R01-9E3

MW: Calculated MW: 151 kDa; Observed MW: 180 kDa

Isotype: IgG

Purification: Affinity Purified

Species Reactivity: Mouse,Rat

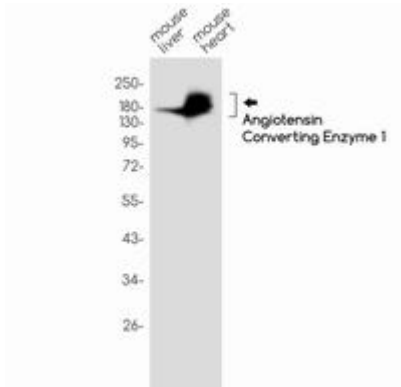
Conjugation: Unconjugated

Modification: Unmodified

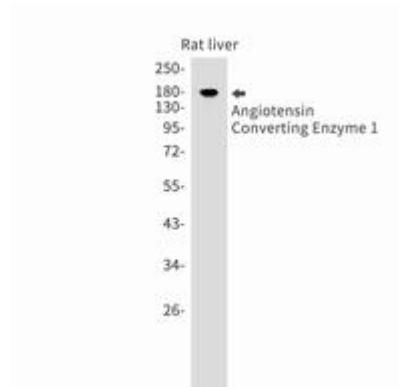
Constituents: PBS (without Mg²⁺ and Ca²⁺), pH 7.3 containing 50% glycerol, 0.5% BSA and 0.02% sodium azide

Research Areas: Cardiovascular

Storage & Shipping: Store at -20°C. Avoid repeated freezing and thawing



Western blot analysis of Angiotensin Converting Enzyme 1 in mouse liver, mouse heart lysates using Angiotensin Converting Enzyme 1 antibody.



Western blot analysis of Angiotensin Converting Enzyme 1 in rat liver lysates using Angiotensin Converting Enzyme 1 antibody.