

## ANGPTL3 RABBIT PAB

**Cat.#:** S216327

**Product Name:** Anti-ANGPTL3 Rabbit Polyclonal Antibody

**Synonyms:** ANL3; ANG-5; FHBL2; ANGPT5

**UNIPROT ID:** Q9Y5C1 (Gene Accession - BC058287)

**Background:** This gene encodes a member of a family of secreted proteins that function in angiogenesis. The encoded protein, which is expressed predominantly in the liver, is further processed into an N-terminal coiled-coil domain-containing chain and a C-terminal fibrinogen chain. The N-terminal chain is important for lipid metabolism, while the C-terminal chain may be involved in angiogenesis. Mutations in this gene cause familial hypobetalipoproteinemia type 2.

**Immunogen:** Fusion protein of human ANGPTL3

**Applications:** ELISA, WB, IHC

**Recommended Dilutions:** IHC: 100-300;WB: 500-2000;ELISA: 5000-10000

**Host Species:** Rabbit

**Clonality:** Rabbit Polyclonal

**Isotype:** Immunogen-specific rabbit IgG

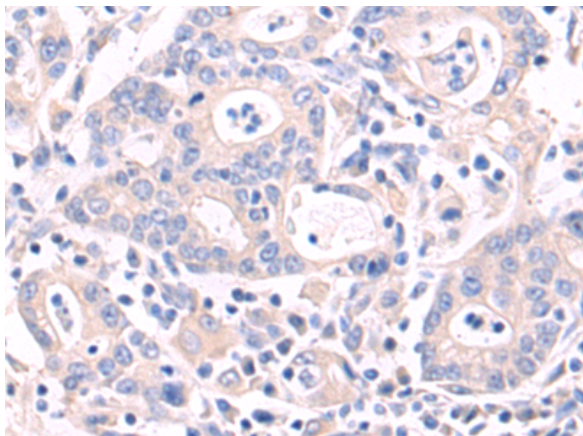
**Purification:** Antigen affinity purification

**Species Reactivity:** Human

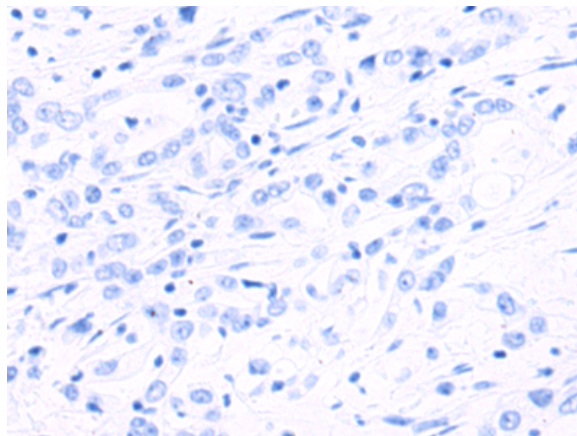
**Constituents:** PBS (without Mg<sup>2+</sup> and Ca<sup>2+</sup>), pH 7.4, 150 mM NaCl, 0.05% Sodium Azide and 40% glycerol

**Research Areas:** Metabolism, Cardiovascular

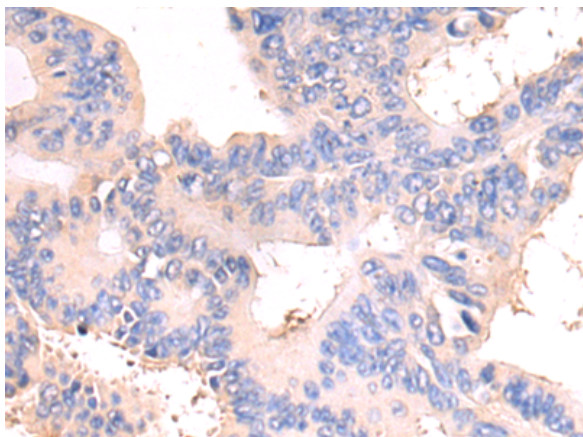
**Storage & Shipping:** Store at -20°C. Avoid repeated freezing and thawing



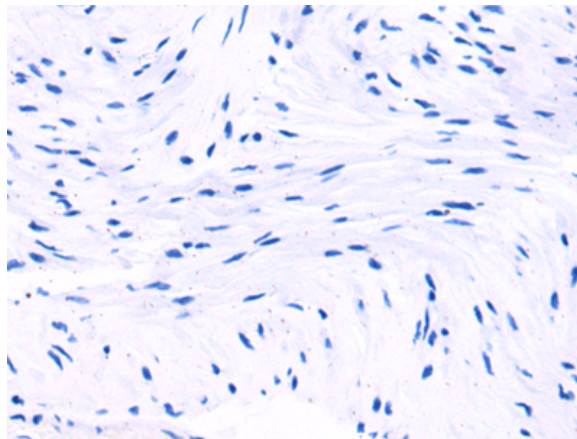
Immunohistochemistry analysis of paraffin embedded Human gastric cancer tissue using 216327(ANGPTL3 Antibody) at a dilution of 1/115(Cytoplasm).



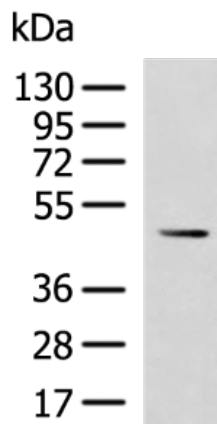
In comparison with the IHC on the left, the same paraffin-embedded Human gastric cancer tissue is first treated with the fusion protein and then with 216327(Anti-ANGPTL3 Antibody) at dilution 1/115.



The image on the left is immunohistochemistry of paraffin-embedded Human colorectal cancer tissue using 216327(Anti-ANGPTL3 Antibody) at a dilution of 1/115.



In comparison with the IHC on the left, the same paraffin-embedded Human colorectal cancer tissue is first treated with fusion protein and then with D220214(Anti-ANGPTL3 Antibody) at dilution 1/115.



Gel: 8%SDS-PAGE, Lysate: 40 µg;  
Lane: LO2 cell lysate;  
Primary antibody: 216327(ANGPTL3 Antibody) at dilution 1/1000;  
Secondary antibody: HRP-conjugated Goat anti rabbit IgG at 1/5000 dilution;  
Exposure time: 5 seconds



# Product Description

Pioneering GTPase and Oncogene Product Development since 2010

---