

## ANGPTL7 RABBIT PAB

**Cat.#:** S217002

**Product Name:** Anti-ANGPTL7 Rabbit Polyclonal Antibody

**Synonyms:** AngX; CDT6; dJ647M16.1; RP4-647M16.2

**UNIPROT ID:** O43827 (Gene Accession - BC001881)

**Background:** Angiotensin-related protein 7 is a protein that in humans is encoded by the ANGPTL7 gene, a member of the ANGPTL family. Highly and specifically expressed in the cornea where is confined to the stromal layer.

**Immunogen:** Fusion protein of human ANGPTL7

**Applications:** ELISA, IHC

**Recommended Dilutions:** IHC: 50-200; ELISA: 1000-5000

**Host Species:** Rabbit

**Clonality:** Rabbit Polyclonal

**Isotype:** Immunogen-specific rabbit IgG

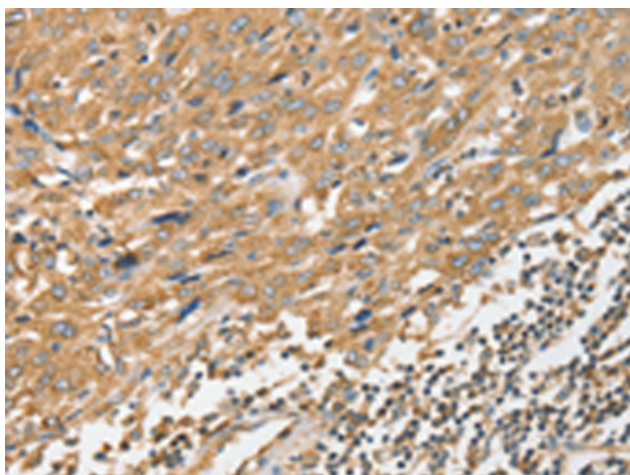
**Purification:** Antigen affinity purification

**Species Reactivity:** Human, Mouse

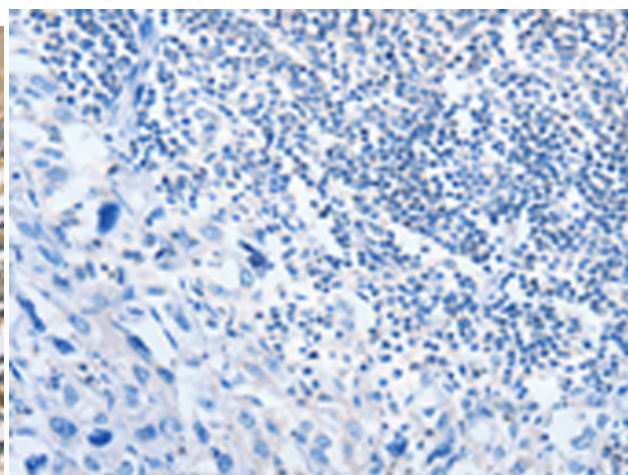
**Constituents:** PBS (without Mg<sup>2+</sup> and Ca<sup>2+</sup>), pH 7.4, 150 mM NaCl, 0.05% Sodium Azide and 40% glycerol

**Research Areas:** Neuroscience, Signal Transduction

**Storage & Shipping:** Store at -20°C. Avoid repeated freezing and thawing



Immunohistochemistry analysis of paraffin embedded Human esophagus cancer tissue using 217002(ANGPTL7 Antibody) at a dilution of 1/40(Cytoplasm).



In comparison with the IHC on the left, the same paraffin-embedded Human esophagus cancer tissue is first treated with the fusion protein and then with 217002(Anti-ANGPTL7 Antibody) at dilution 1/40.