

ANP32C RABBIT PAB

Cat.#: S213848

Product Name: Anti-ANP32C Rabbit Polyclonal Antibody

Synonyms: PP32R1

UNIPROT ID: O43423 (Gene Accession - NP_036535)

Background: Predicted to enable histone binding activity. Predicted to be involved in nucleocytoplasmic transport and regulation of apoptotic process. Predicted to be active in perinuclear region of cytoplasm. [provided by Alliance of Genome Resources, Apr 2022]

Immunogen: Synthetic peptide of human ANP32C

Applications: ELISA, IHC

Recommended Dilutions: IHC: 50-100; ELISA: 5000-10000

Host Species: Rabbit

Clonality: Rabbit Polyclonal

Isotype: Immunogen-specific rabbit IgG

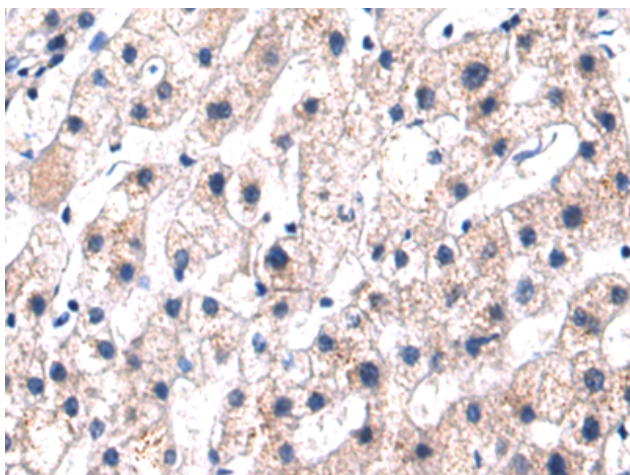
Purification: Antigen affinity purification

Species Reactivity: Human

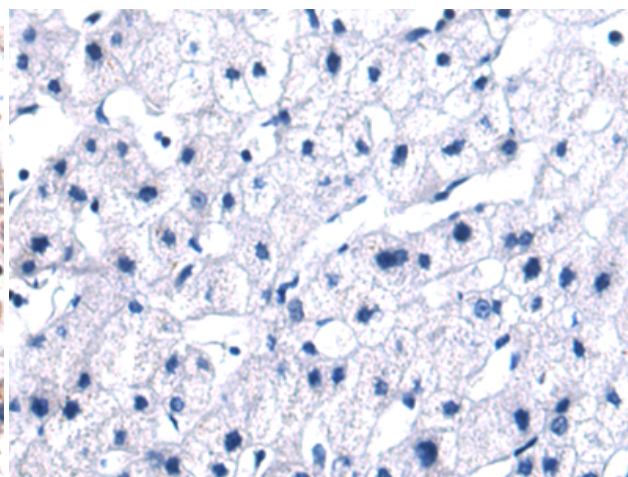
Constituents: PBS (without Mg²⁺ and Ca²⁺), pH 7.4, 150 mM NaCl, 0.05% Sodium Azide and 40% glycerol

Research Areas: Cancer

Storage & Shipping: Store at -20°C. Avoid repeated freezing and thawing



Immunohistochemistry analysis of paraffin embedded Human liver cancer tissue using 213848(ANP32C Antibody) at a dilution of 1/50(Cytoplasm).



In comparison with the IHC on the left, the same paraffin-embedded Human liver cancer tissue is first treated with the synthetic peptide and then with 213848(Anti-ANP32C Antibody) at dilution 1/50.