

## ANTERIOR GRADIENT 2 RABBIT MAB

**Cat.#:** N261650

**Product Name:** Anti-Anterior Gradient 2 Rabbit Monoclonal Antibody

**Synonyms:** Anterior gradient protein 2 homolog; AG-2; hAG-2; HPC8; Secreted cement gland protein XAG-2 homolog; AGR2; AG2; GOB4; XAG2

**UNIPROT ID:** O95994

**Background:** AGR2 is a member of the protein disulfide isomerase (PDI) family of proteins and a homolog of the *Xenopus laevis* cement gland protein. Required for MUC2 post-transcriptional synthesis and secretion. May play a role in the production of mucus by intestinal cells (By similarity). Proto-oncogene that may play a role in cell migration, cell differentiation and cell growth.

**Immunogen:** A synthetic peptide of human Anterior Gradient 2

**Applications:** WB,IHC-F,IHC-P,ICC/IF,IP

**Recommended Dilutions:** WB: 1/500-1/1000 IHC: 1/50-1/100 IF: 1/50-1/200 IP: 1/20

**Host Species:** Rabbit

**Clonality:** Rabbit Monoclonal

**Clone ID:** R04-1H6

**MW:** Calculated MW: 20 kDa; Observed MW: 20 kDa

**Isotype:** IgG

**Purification:** Affinity Purified

**Species Reactivity:** Human,Rat

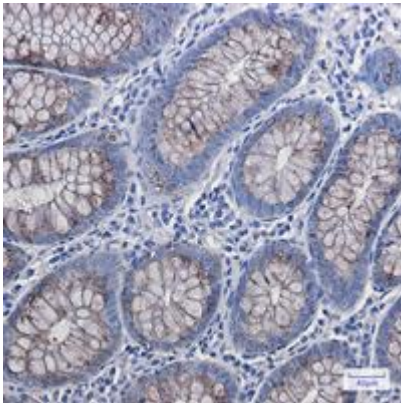
**Conjugation:** Unconjugated

**Modification:** Unmodified

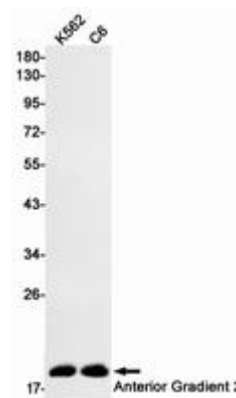
**Constituents:** PBS (without Mg<sup>2+</sup> and Ca<sup>2+</sup>), pH 7.3 containing 50% glycerol, 0.5% BSA and 0.02% sodium azide

**Research Areas:** Cancer

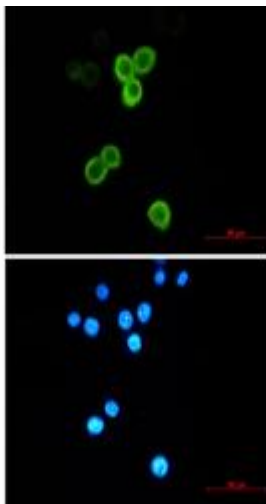
**Storage & Shipping:** Store at -20°C. Avoid repeated freezing and thawing



Immunohistochemistry analysis of paraffin-embedded colon using Anterior Gradient 2 antibody. High-pressure and temperature Sodium Citrate pH 6.0 was used for antigen retrieval.



Western blot analysis of Anterior Gradient 2 in K562, C6 lysates using Anterior Gradient 2 antibody.



Immunocytochemistry analysis of Anterior Gradient 2 (green) in MCF-7 using Anterior Gradient 2 antibody, and DAPI (blue)