

## ANTXR1 RABBIT PAB

**Cat.#:** S216245

**Product Name:** Anti-ANTXR1 Rabbit Polyclonal Antibody

**Synonyms:** ATR; TEM8

**UNIPROT ID:** Q9H6X2 (Gene Accession - BC012074 )

**Background:** This gene encodes a type I transmembrane protein and is a tumor-specific endothelial marker that has been implicated in colorectal cancer. The encoded protein has been shown to also be a docking protein or receptor for Bacillus anthracis toxin, the causative agent of the disease, anthrax. The binding of the protective antigen (PA) component, of the tripartite anthrax toxin, to this receptor protein mediates delivery of toxin components to the cytosol of cells. Once inside the cell, the other two components of anthrax toxin, edema factor (EF) and lethal factor (LF) disrupt normal cellular processes. Three alternatively spliced variants that encode different protein isoforms have been described.

**Immunogen:** Fusion protein of human ANTXR1

**Applications:** ELISA, WB, IHC

**Recommended Dilutions:** IHC: 25-100;WB: 200-1000;ELISA: 2000-5000

**Host Species:** Rabbit

**Clonality:** Rabbit Polyclonal

**Isotype:** Immunogen-specific rabbit IgG

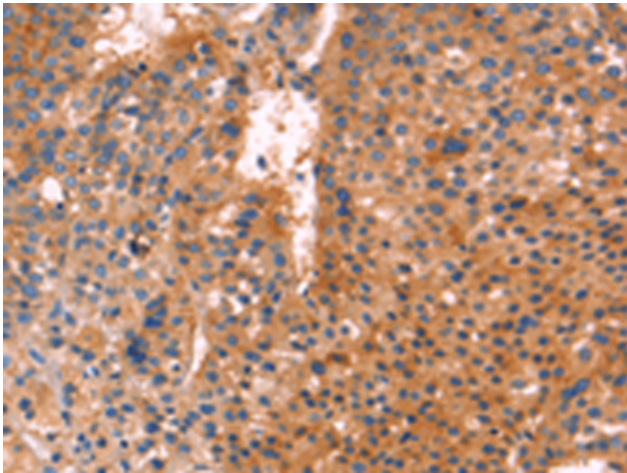
**Purification:** Antigen affinity purification

**Species Reactivity:** Human, Mouse, Rat

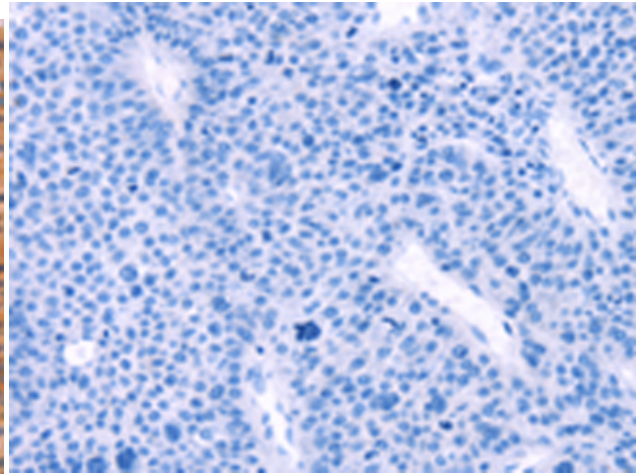
**Constituents:** PBS (without Mg<sup>2+</sup> and Ca<sup>2+</sup>), pH 7.4, 150 mM NaCl, 0.05% Sodium Azide and 40% glycerol

**Research Areas:** Cardiovascular, Immunology

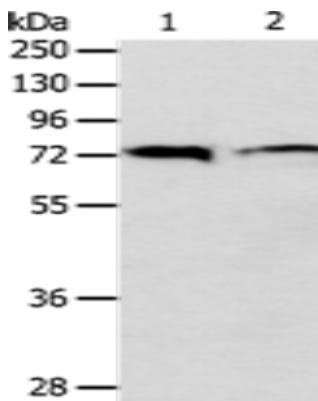
**Storage & Shipping:** Store at -20°C. Avoid repeated freezing and thawing



Immunohistochemistry analysis of paraffin embedded Human liver cancer tissue using 216245(ANTXR1 Antibody) at a dilution of 1/25(Cytoplasm).



In comparison with the IHC on the left, the same paraffin-embedded Human liver cancer tissue is first treated with the fusion protein and then with 216245(Anti-ANTXR1 Antibody) at dilution 1/25.



Gel: 10%SDS-PAGE, Lysate: 40 µg;  
Lane 1-2: Lovo cells, human liver cancer tissue;  
Primary antibody: 216245(ANTXR1 Antibody) at dilution 1/300;  
Secondary antibody: Goat anti rabbit IgG at 1/8000 dilution;  
Exposure time: 30 seconds