

## ANXA13 RABBIT PAB

**Cat.#:** S216334

**Product Name:** Anti-ANXA13 Rabbit Polyclonal Antibody

**Synonyms:** ISA; ANX13

**UNIPROT ID:** P27216 (Gene Accession - BC125158 )

**Background:** This gene encodes a member of the annexin family. Members of this calcium-dependent phospholipid-binding protein family play a role in the regulation of cellular growth and in signal transduction pathways. The specific function of this gene has not yet been determined; however, it is associated with the plasma membrane of undifferentiated, proliferating endothelial cells and differentiated villus enterocytes. Alternatively spliced transcript variants encoding different isoforms have been identified.

**Immunogen:** Fusion protein of human ANXA13

**Applications:** ELISA, WB, IHC

**Recommended Dilutions:** IHC: 100-300;WB: 500-2000;ELISA: 5000-10000

**Host Species:** Rabbit

**Clonality:** Rabbit Polyclonal

**Isotype:** Immunogen-specific rabbit IgG

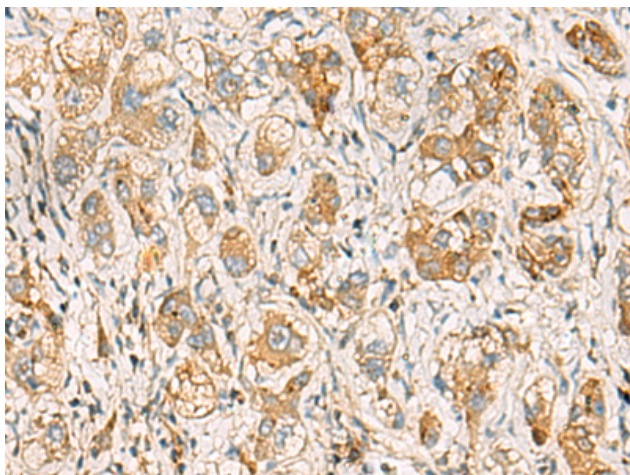
**Purification:** Antigen affinity purification

**Species Reactivity:** Human, Mouse, Rat

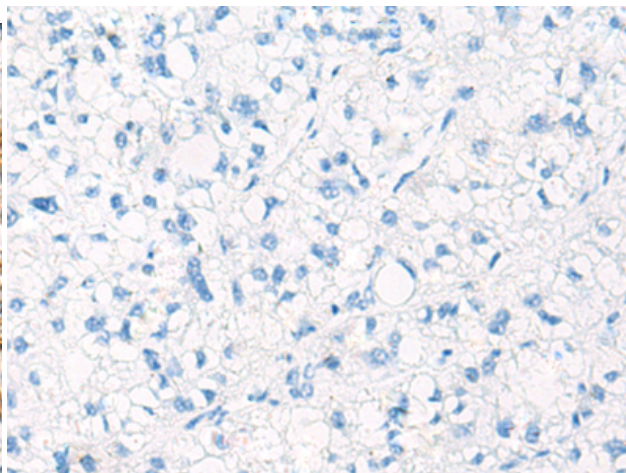
**Constituents:** PBS (without Mg<sup>2+</sup> and Ca<sup>2+</sup>), pH 7.4, 150 mM NaCl, 0.05% Sodium Azide and 40% glycerol

**Research Areas:** Signal Transduction

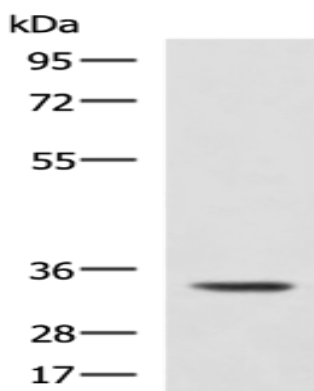
**Storage & Shipping:** Store at -20°C. Avoid repeated freezing and thawing



Immunohistochemistry analysis of paraffin embedded Human liver cancer tissue using 216334(ANXA13 Antibody) at a dilution of 1/90(Cell membrane and Cytoplasm).



In comparison with the IHC on the left, the same paraffin-embedded Human liver cancer tissue is first treated with the fusion protein and then with 216334(Anti-ANXA13 Antibody) at dilution 1/90.



Gel: 8%SDS-PAGE, Lysate: 40  $\mu$ g;  
Lane: Rat skeletal muscle tissue lysate;  
Primary antibody: 216334(ANXA13 Antibody) at dilution 1/800;  
Secondary antibody: HRP-conjugated Goat anti rabbit IgG at 1/5000 dilution;  
Exposure time: 5 seconds