

## ANXA6 RABBIT PAB

**Cat.#:** S216332

**Product Name:** Anti-ANXA6 Rabbit Polyclonal Antibody

**Synonyms:** ANX6, CBP68

**UNIPROT ID:** P08133 (Gene Accession - BC017046 )

**Background:** Annexin VI belongs to a family of calcium-dependent membrane and phospholipid binding proteins. Several members of the annexin family have been implicated in membrane-related events along exocytotic and endocytotic pathways. The annexin VI gene is approximately 60 kbp long and contains 26 exons. It encodes a protein of about 68 kDa that consists of eight 68-amino acid repeats separated by linking sequences of variable lengths. It is highly similar to human annexins I and II sequences, each of which contain four such repeats. Annexin VI has been implicated in mediating the endosome aggregation and vesicle fusion in secreting epithelia during exocytosis. Alternatively spliced transcript variants have been described.

**Immunogen:** Fusion protein of human ANXA6

**Applications:** ELISA, WB, IHC

**Recommended Dilutions:** IHC: 25-100;WB: 200-500;ELISA: 1000-2000

**Host Species:** Rabbit

**Clonality:** Rabbit Polyclonal

**Isotype:** Immunogen-specific rabbit IgG

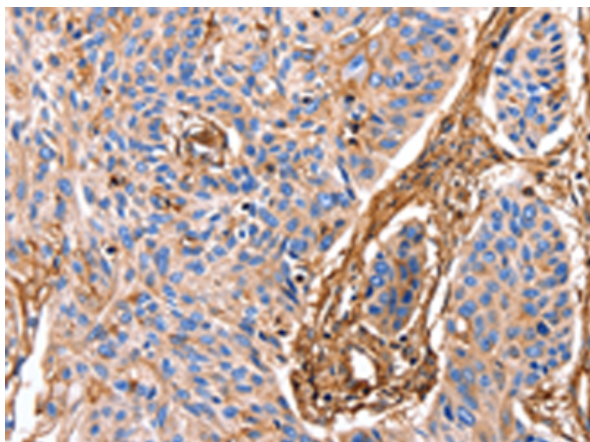
**Purification:** Antigen affinity purification

**Species Reactivity:** Human, Mouse, Rat

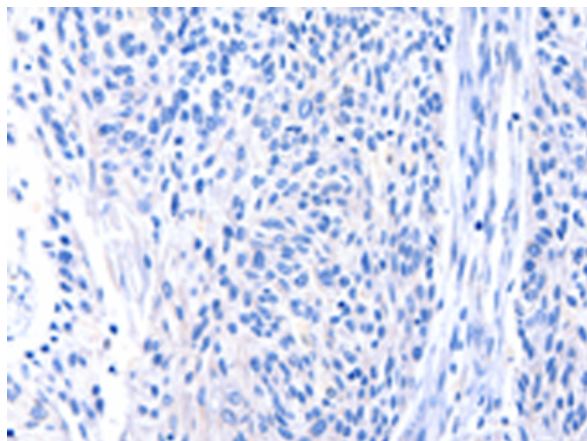
**Constituents:** PBS (without Mg<sup>2+</sup> and Ca<sup>2+</sup>), pH 7.4, 150 mM NaCl, 0.05% Sodium Azide and 40% glycerol

**Research Areas:** Signal Transduction

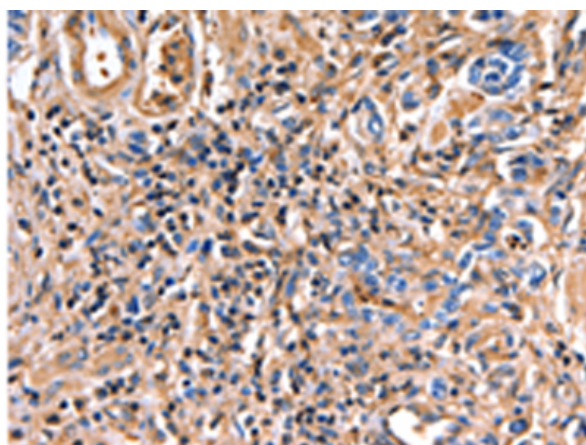
**Storage & Shipping:** Store at -20°C. Avoid repeated freezing and thawing



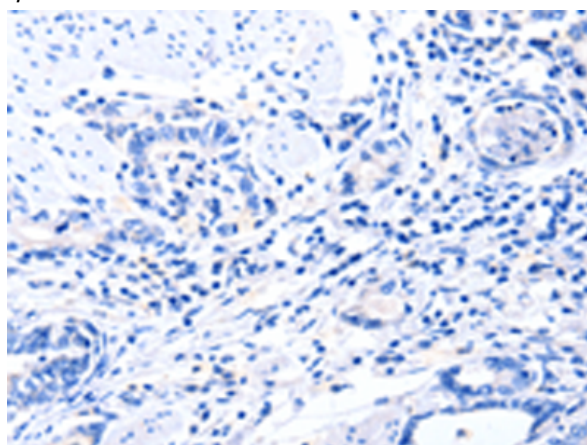
Immunohistochemistry analysis of paraffin embedded Human esophagus cancer tissue using 216332(ANXA6 Antibody) at a dilution of 1/17(Cytoplasm, Cell membrane).



In comparison with the IHC on the left, the same paraffin-embedded Human esophagus cancer tissue is first treated with the fusion protein and then with 216332(Anti-ANXA6 Antibody) at dilution 1/17.



The image on the left is immunohistochemistry of paraffin-embedded Human gastric cancer tissue using 216332(Anti-ANXA6 Antibody) at a dilution of 1/17.



In comparison with the IHC on the left, the same paraffin-embedded Human gastric cancer tissue is first treated with fusion protein and then with D220221(Anti-ANXA6 Antibody) at dilution 1/17.



Gel: 10%SDS-PAGE, Lysate: 30 µg;  
Lane: Mouse kidney tissue;  
Primary antibody: 216332(ANXA6 Antibody) at dilution 1/350;  
Secondary antibody: Goat anti rabbit IgG at 1/8000 dilution;  
Exposure time: 10 seconds



# Product Description

Pioneering GTPase and Oncogene Product Development since 2010

---