

AP1B1 RABBIT PAB

Cat.#: S220295

Product Name: Anti-AP1B1 Rabbit Polyclonal Antibody

Synonyms: ADTB1; BAM22; AP105A; CLAPB2

UNIPROT ID: Q10567 (Gene Accession - NP_001118)

Background: Adaptor protein complex 1 is found at the cytoplasmic face of coated vesicles located at the Golgi complex where it mediates both the recruitment of clathrin to the membrane and the recognition of sorting signals within the cytosolic tails of transmembrane receptors. This complex is a heterotetramer composed of two large, one medium, and one small adaptin subunit. The protein encoded by this gene serves as one of the large subunits of this complex and is a member of the adaptin protein family. This gene is a candidate meningioma gene. Alternative splicing results in multiple transcript variants.

Immunogen: Synthetic peptide of human AP1B1

Applications: ELISA, IHC

Recommended Dilutions: IHC: 50-200; ELISA: 2000-5000

Host Species: Rabbit

Clonality: Rabbit Polyclonal

Isotype: Immunogen-specific rabbit IgG

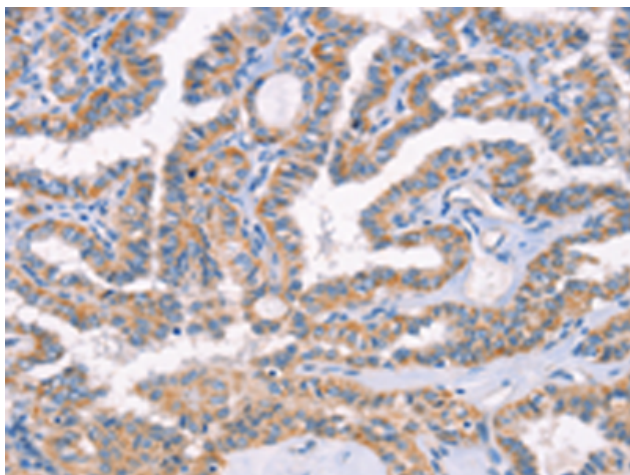
Purification: Antigen affinity purification

Species Reactivity: Human, Mouse, Rat

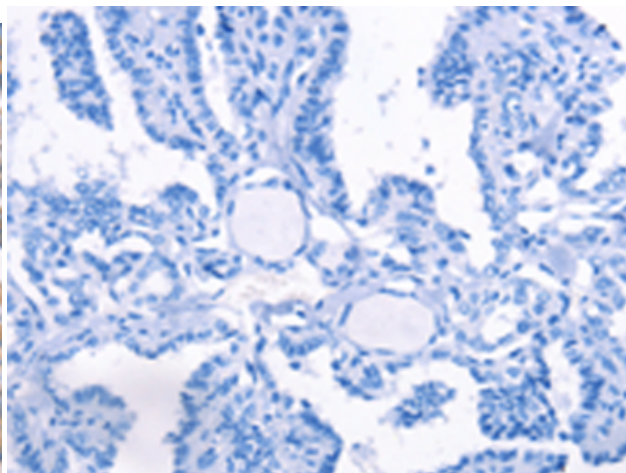
Constituents: PBS (without Mg²⁺ and Ca²⁺), pH 7.4, 150 mM NaCl, 0.05% Sodium Azide and 40% glycerol

Research Areas: Signal Transduction

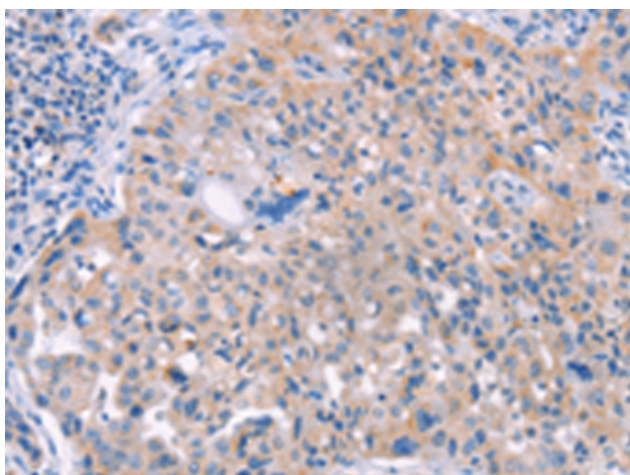
Storage & Shipping: Store at -20°C. Avoid repeated freezing and thawing



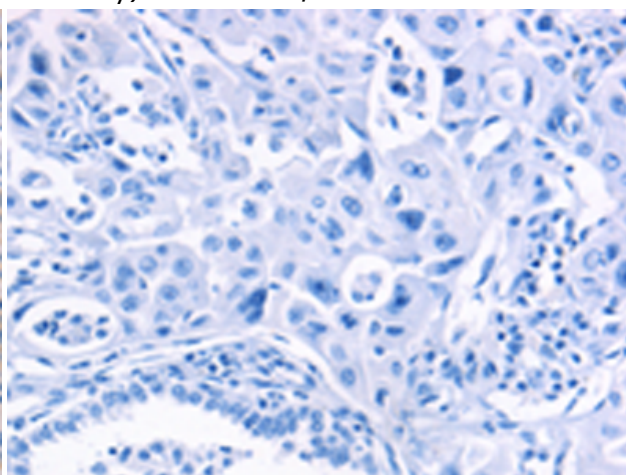
Immunohistochemistry analysis of paraffin embedded Human thyroid cancer tissue using 220295 (APIB1 Antibody) at a dilution of 1/70 (Cytoplasm).



In comparison with the IHC on the left, the same paraffin-embedded Human thyroid cancer tissue is first treated with the synthetic peptide and then with 220295 (Anti-APIB1 Antibody) at dilution 1/70.



The image on the left is immunohistochemistry of paraffin-embedded Human lung cancer tissue using 220295 (Anti-APIB1 Antibody) at a dilution of 1/70.



In comparison with the IHC on the left, the same paraffin-embedded Human lung cancer tissue is first treated with synthetic peptide and then with D261284 (Anti-APIB1 Antibody) at dilution 1/70.