

## AP1S1 RABBIT PAB

**Cat.#:** S212504

**Product Name:** Anti-AP1S1 Rabbit Polyclonal Antibody

**Synonyms:** AP19; EKV3; CLAPS1; MEDNIK; SIGMA1A

**UNIPROT ID:** P61966 (Gene Accession - BC003561 )

**Background:** The protein encoded by this gene is part of the clathrin coat assembly complex which links clathrin to receptors in coated vesicles. These vesicles are involved in endocytosis and Golgi processing. This protein, as well as beta-prime-adaptin, gamma-adaptin, and the medium ( $\mu$ ) chain AP47, form the AP-1 assembly protein complex located at the Golgi vesicle.

**Immunogen:** Fusion protein of human AP1S1

**Applications:** ELISA, IHC

**Recommended Dilutions:** IHC: 50-300; ELISA: 5000-10000

**Host Species:** Rabbit

**Clonality:** Rabbit Polyclonal

**Isotype:** Immunogen-specific rabbit IgG

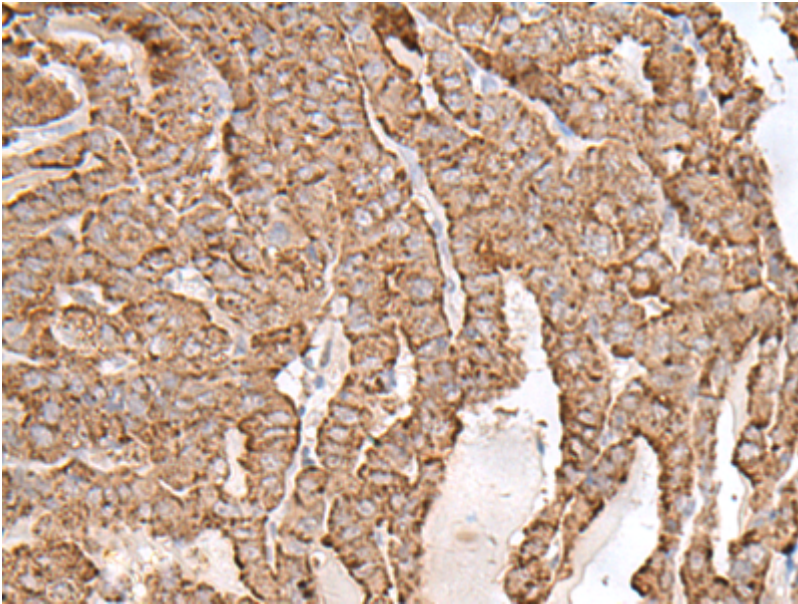
**Purification:** Antigen affinity purification

**Species Reactivity:** Human, Mouse

**Constituents:** PBS (without  $Mg^{2+}$  and  $Ca^{2+}$ ), pH 7.4, 150 mM NaCl, 0.05% Sodium Azide and 40% glycerol

**Research Areas:** Signal Transduction

**Storage & Shipping:** Store at  $-20^{\circ}C$ . Avoid repeated freezing and thawing



Immunohistochemistry analysis of paraffin-embedded Human thyroid cancer tissue using 212504(AP1S1 Antibody) at a dilution of 1/65(Cytoplasm).