

## AP2 ALPHA RABBIT MAB

**Cat.#:** N261850

**Product Name:** Anti-AP2 alpha Rabbit Monoclonal Antibody

**Synonyms:** AP-2; BOFS; AP2TF; TFAP2; AP-2alpha

**UNIPROT ID:** P05549

**Background:** Sequence-specific DNA-binding protein that interacts with inducible viral and cellular enhancer elements to regulate transcription of selected genes. AP-2 factors bind to the consensus sequence 5'-GCCNNNGGC-3' and activate genes involved in a large spectrum of important biological functions including proper eye, face, body wall, limb and neural tube development.

**Immunogen:** A synthetic peptide of human AP2 alpha

**Applications:** WB,IP

**Recommended Dilutions:** WB: 1/500-1/1000 IP: 1/20

**Host Species:** Rabbit

**Clonality:** Rabbit Monoclonal

**Clone ID:** R07-7E5

**MW:** Calculated MW: 48 kDa; Observed MW: 48 kDa

**Isotype:** IgG

**Purification:** Affinity Purified

**Species Reactivity:** Rat

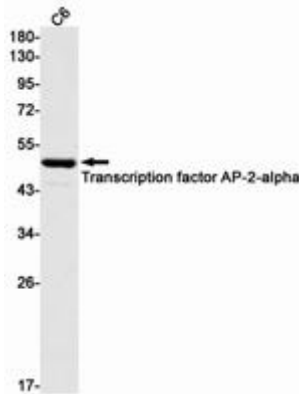
**Conjugation:** Unconjugated

**Modification:** Unmodified

**Constituents:** PBS (without Mg<sup>2+</sup> and Ca<sup>2+</sup>), pH 7.3 containing 50% glycerol, 0.5% BSA and 0.02% sodium azide

**Research Areas:** Epigenetics and Nuclear Signaling

**Storage & Shipping:** Store at -20°C. Avoid repeated freezing and thawing



Western blot analysis of AP2alpha in C6 lysates using AP2 alpha antibody.