

AP2M1 RABBIT PAB

Cat.#: S217010

Product Name: Anti-AP2M1 Rabbit Polyclonal Antibody

Synonyms: mu2; AP50; CLAPM1

UNIPROT ID: Q96CW1 (Gene Accession - BC013796)

Background: This gene encodes a subunit of the heterotetrameric coat assembly protein complex 2 (AP2), which belongs to the adaptor complexes medium subunits family. The encoded protein is required for the activity of a vacuolar ATPase, which is responsible for proton pumping occurring in the acidification of endosomes and lysosomes. The encoded protein may also play an important role in regulating the intracellular trafficking and function of CTLA-4 protein. Two transcript variants encoding different isoforms have been found for this gene.

Immunogen: Fusion protein of human AP2M1

Applications: ELISA, IHC

Recommended Dilutions: IHC: 15–50; ELISA: 1000–2000

Host Species: Rabbit

Clonality: Rabbit Polyclonal

Isotype: Immunogen-specific rabbit IgG

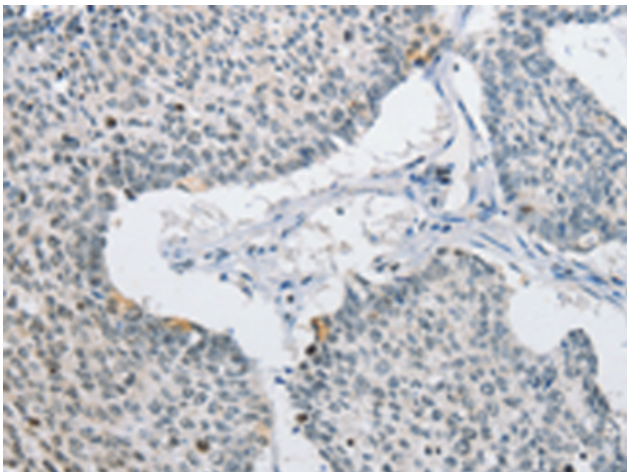
Purification: Antigen affinity purification

Species Reactivity: Human, Mouse, Rat

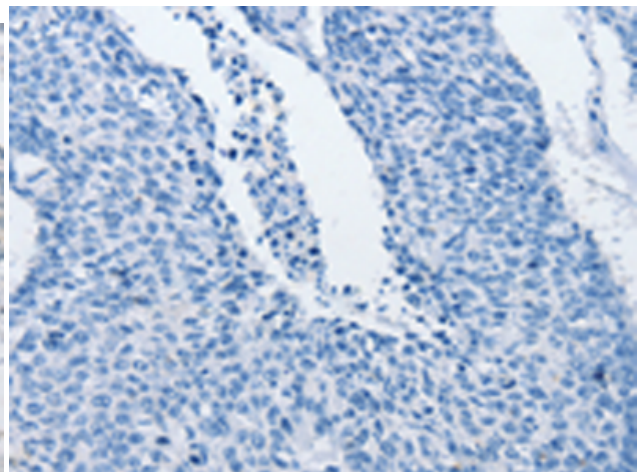
Constituents: PBS (without Mg²⁺ and Ca²⁺), pH 7.4, 150 mM NaCl, 0.05% Sodium Azide and 40% glycerol

Research Areas: Signal Transduction

Storage & Shipping: Store at -20°C. Avoid repeated freezing and thawing



Immunohistochemistry analysis of paraffin embedded Human lung cancer tissue using 217010 (AP2M1 Antibody) at a dilution of 1/15 (Cytoplasm or Nucleus).



In comparison with the IHC on the left, the same paraffin-embedded Human lung cancer tissue is first treated with the fusion protein and then with 217010 (Anti-AP2M1 Antibody) at dilution 1/15.