

AP3B1 RABBIT PAB

Cat.#: S219411

Product Name: Anti-AP3B1 Rabbit Polyclonal Antibody

Synonyms: PE; HPS; HPS2; ADTB3; ADTB3A

UNIPROT ID: O00203 (Gene Accession - BC038444)

Background: This gene encodes a protein that may play a role in organelle biogenesis associated with melanosomes, platelet dense granules, and lysosomes. The encoded protein is part of the heterotetrameric AP-3 protein complex which interacts with the scaffolding protein clathrin. Mutations in this gene are associated with Hermansky-Pudlak syndrome type 2. Two transcript variants encoding different isoforms have been found for this gene.

Immunogen: Fusion protein of human AP3B1

Applications: ELISA, IHC

Recommended Dilutions: IHC: 200-300; ELISA: 5000-10000

Host Species: Rabbit

Clonality: Rabbit Polyclonal

Isotype: Immunogen-specific rabbit IgG

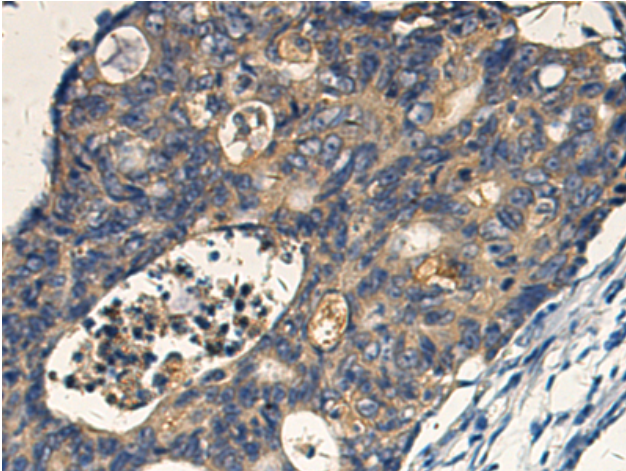
Purification: Antigen affinity purification

Species Reactivity: Human, Mouse, Rat

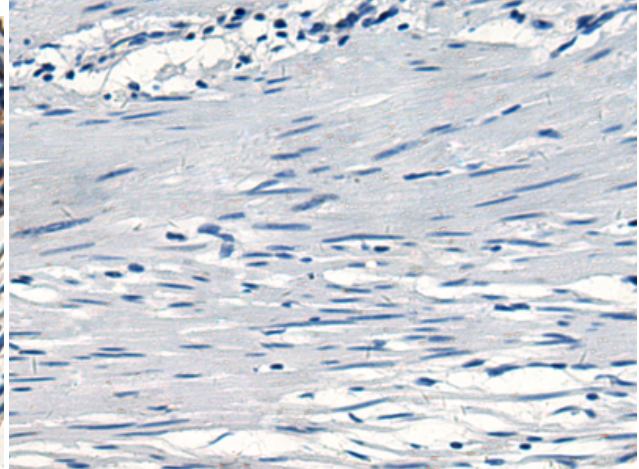
Constituents: PBS (without Mg²⁺ and Ca²⁺), pH 7.4, 150 mM NaCl, 0.05% Sodium Azide and 40% glycerol

Research Areas: Signal Transduction

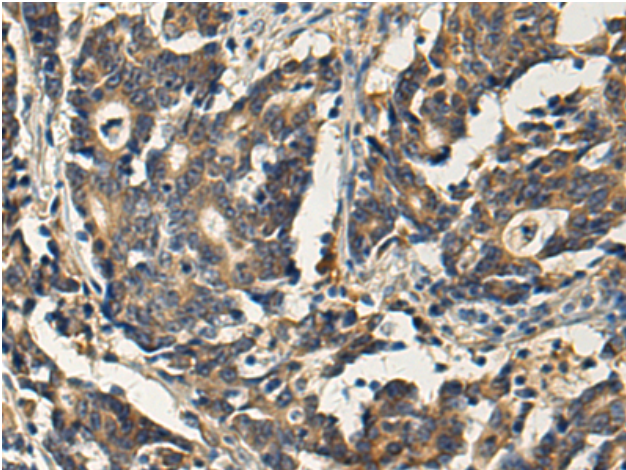
Storage & Shipping: Store at -20°C. Avoid repeated freezing and thawing



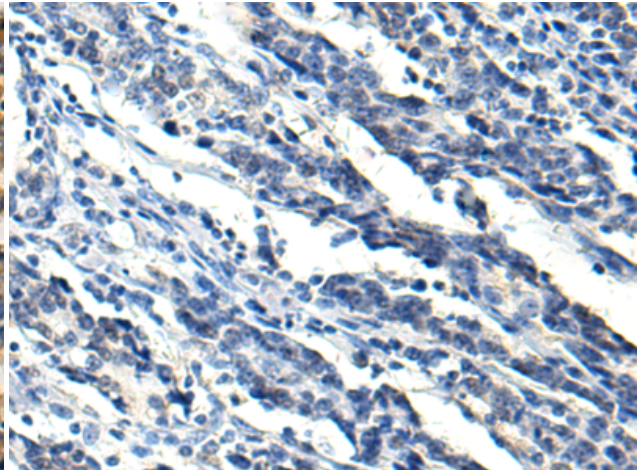
Immunohistochemistry analysis of paraffin embedded Human colorectal cancer tissue using 219411 (AP3B1 Antibody) at a dilution of 1/190 (Cytoplasm).



In comparison with the IHC on the left, the same paraffin-embedded Human colorectal cancer tissue is first treated with the fusion protein and then with 219411 (Anti-AP3B1 Antibody) at dilution 1/190.



The image on the left is immunohistochemistry of paraffin-embedded Human gastric cancer tissue using 219411 (Anti-AP3B1 Antibody) at a dilution of 1/190.



In comparison with the IHC on the left, the same paraffin-embedded Human gastric cancer tissue is first treated with fusion protein and then with D226813 (Anti-AP3B1 Antibody) at dilution 1/190.