

## APG5L (3C10) MOUSE MAB

**Cat.#:** N261354

**Product Name:** Anti-APG5L (3C10) Mouse Monoclonal Antibody

**Synonyms:** APG 5L; APG5; APG5 autophagy 5 like; APG5 like; APG5-like; Apoptosis specific protein; ASP; ATG 5; ATG5 autophagy related 5 homolog; Autophagy protein 5; hAPG5

**UNIPROT ID:** Q9HIY0

**Background:** Required for autophagy. Conjugates to ATG12 and associates with isolation membrane to form cup-shaped isolation membrane and autophagosome. Involved in mitochondrial quality control after oxidative damage, and in subsequent cellular longevity.

**Immunogen:** Purified recombinant protein expressed in E.coli.

**Applications:** WB,IHC-P

**Recommended Dilutions:** WB: 1/500-1/1000 IHC: 1/50-1/100

**Host Species:** Mouse

**Clonality:** Mouse Monoclonal

**Clone ID:** 3C10-5C8-8C3

**MW:** Calculated MW: 32 kDa; Observed MW: 55 kDa

**Isotype:** IgG1

**Purification:** Affinity Purified

**Species Reactivity:** Human,Rat,Mouse

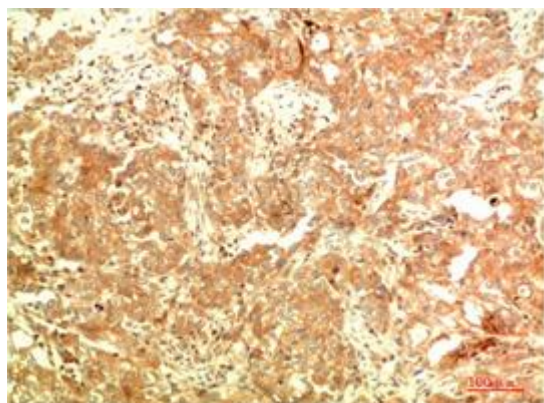
**Conjugation:** Unconjugated

**Modification:** Unmodified

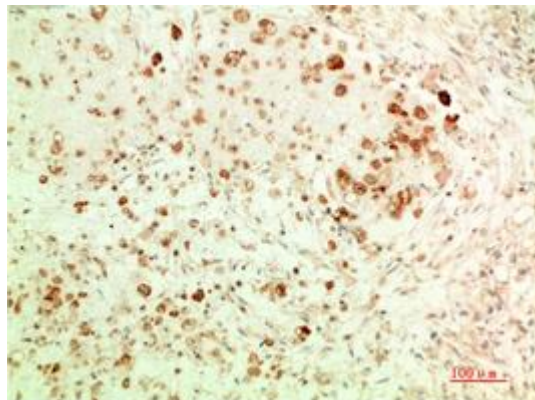
**Constituents:** PBS (without Mg<sup>2+</sup> and Ca<sup>2+</sup>), pH 7.3 containing 50% glycerol, 0.5% BSA and 0.02% sodium azide

**Research Areas:** Cell Biology

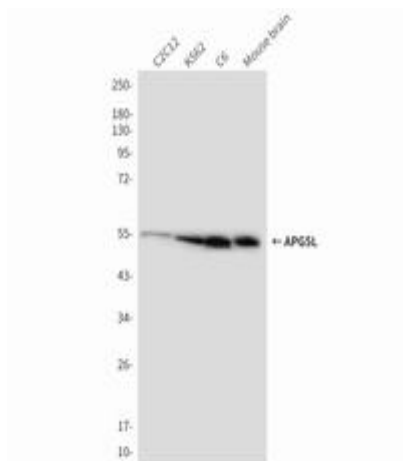
**Storage & Shipping:** Store at -20°C. Avoid repeated freezing and thawing



Immunohistochemical analysis of paraffin-embedded Human tonsils using APG5L (3C10) antibody. High-pressure and temperature Sodium Citrate pH 6.0 was used for antigen retrieval.



Immunohistochemistry analysis of paraffin-embedded Human Ovarian Carcinoma Tissue using APG5L (3C10) antibody. High-pressure and temperature Sodium Citrate pH 6.0 was used for antigen retrieval.



Western blot analysis of APG5L (3C10) in C2C12, K562, C6, mouse brain lysates using APG5L (3C10) antibody