

## APG5L RABBIT MAB

**Cat.#:** N261857

**Product Name:** Anti-APG5L Rabbit Monoclonal Antibody

**Synonyms:** APG 5L; APG5; APG5 autophagy 5 like; APG5 like; APG5-like; Apoptosis specific protein; ASP; ATG 5; ATG5 autophagy related 5 homolog; Autophagy protein 5; hAPG5

**UNIPROT ID:** Q9HIY0

**Background:** Required for autophagy. Conjugates to ATG12 and associates with isolation membrane to form cup-shaped isolation membrane and autophagosome. Involved in mitochondrial quality control after oxidative damage, and in subsequent cellular longevity.

**Immunogen:** A synthetic peptide of human APG5L/ATG5

**Applications:** WB, ICC/IF, IP

**Recommended Dilutions:** WB: 1/500-1/1000 IF: 1/50-1/200 IP: 1/20

**Host Species:** Rabbit

**Clonality:** Rabbit Monoclonal

**Clone ID:** R05-4F2

**MW:** Calculated MW: 32 kDa; Observed MW: 55 kDa

**Isotype:** IgG

**Purification:** Affinity Purified

**Species Reactivity:** Human, Mouse, Rat

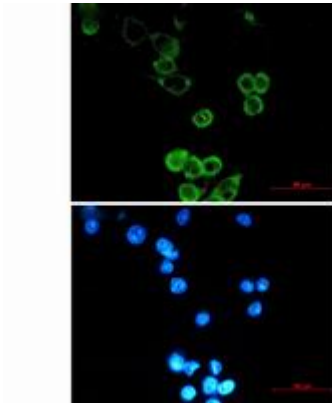
**Conjugation:** Unconjugated

**Modification:** Unmodified

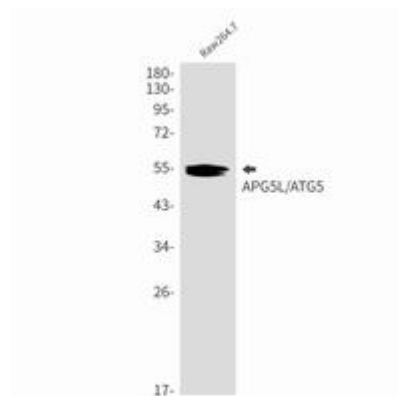
**Constituents:** PBS (without Mg<sup>2+</sup> and Ca<sup>2+</sup>), pH 7.3 containing 50% glycerol, 0.5% BSA and 0.02% sodium azide

**Research Areas:** Cell Biology

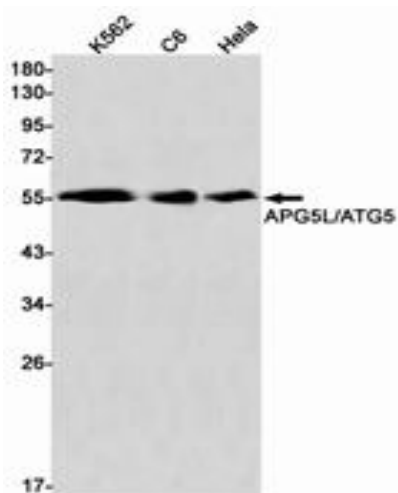
**Storage & Shipping:** Store at -20°C. Avoid repeated freezing and thawing



Immunocytochemistry analysis of APG5L/ATG5 (green) in MCF-7 using APG5L/ATG5 antibody, and DAPI (blue)



Western blot analysis of APG5L/ATG5 in Raw264.7 lysates using APG5L antibody.



Western blot analysis of APG5L/ATG5 Rabbit pA in K562, C6, HeLa lysates using APG5L/ATG5 antibody.