

## APIP RABBIT PAB

**Cat.#:** S216290

**Product Name:** Anti-APIP Rabbit Polyclonal Antibody

**Synonyms:** APIP2, CGI29, CGI-29, MMRP19, dJ179L10.2

**UNIPROT ID:** Q96GX9 (Gene Accession - BC008440 )

**Background:** APIP is an APAF1 (MIM 602233)-interacting protein that acts as a negative regulator of ischemic/hypoxic injury. The protein highly expressed in skeletal muscle and heart and binds to the CARD of Apaf-1 in competition with caspase-9. Exogenous APIP inhibits cytochrome c-induced activation of caspase-3 and caspase-9, and suppresses cell death triggered by mitochondrial apoptotic stimuli through inhibiting the downstream activity of cytochrome c released from mitochondria.

**Immunogen:** Fusion protein of human APIP

**Applications:** ELISA, WB, IHC

**Recommended Dilutions:** IHC: 25-100;WB: 200-1000;ELISA: 500-5000

**Host Species:** Rabbit

**Clonality:** Rabbit Polyclonal

**Isotype:** Immunogen-specific rabbit IgG

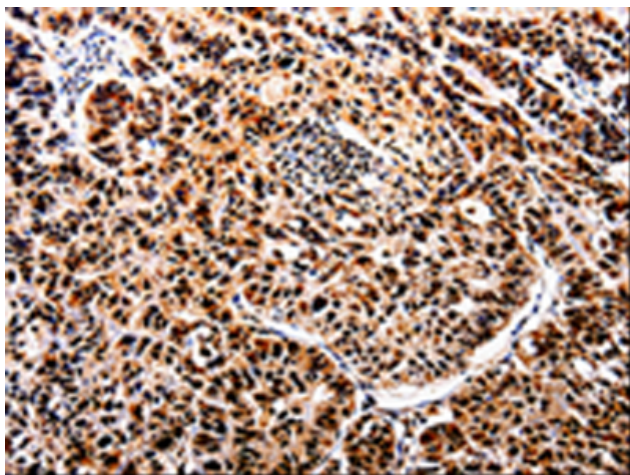
**Purification:** Antigen affinity purification

**Species Reactivity:** Human, Mouse

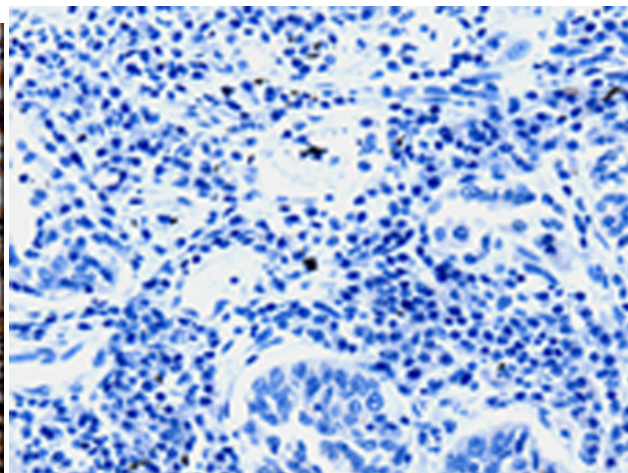
**Constituents:** PBS (without Mg<sup>2+</sup> and Ca<sup>2+</sup>), pH 7.4, 150 mM NaCl, 0.05% Sodium Azide and 40% glycerol

**Research Areas:** Cancer

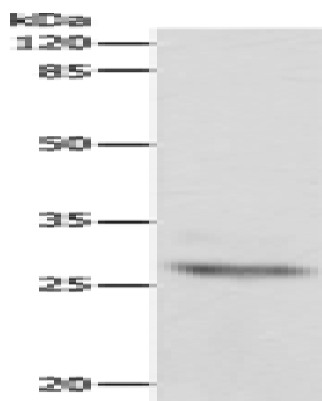
**Storage & Shipping:** Store at -20°C. Avoid repeated freezing and thawing



Immunohistochemistry analysis of paraffin embedded Human lung cancer tissue using 216290 (APIP Antibody) at a dilution of 1/25 (Cytoplasm, Nucleus).



In comparison with the IHC on the left, the same paraffin-embedded Human lung cancer tissue is first treated with the fusion protein and then with 216290 (Anti-APIP Antibody) at dilution 1/25.



Gel: 10% SDS-PAGE, Lysate: 60  $\mu$ g;  
Lane: Mouse heart tissue;  
Primary antibody: 216290 (APIP Antibody) at dilution 1/300;  
Secondary antibody: Goat anti rabbit IgG at 1/8000 dilution;  
Exposure time: 10 seconds