

## APOD RABBIT PAB

**Cat.#:** S221627

**Product Name:** Anti-APOD Rabbit Polyclonal Antibody

**Synonyms:**

**UNIPROT ID:** P05090 (Gene Accession - NP\_001638 )

**Background:** This gene encodes a component of high density lipoprotein that has no marked similarity to other apolipoprotein sequences. It has a high degree of homology to plasma retinol-binding protein and other members of the alpha 2 microglobulin protein superfamily of carrier proteins, also known as lipocalins. This glycoprotein is closely associated with the enzyme lecithin:cholesterol acyltransferase - an enzyme involved in lipoprotein metabolism.

**Immunogen:** Synthetic peptide of human APOD

**Applications:** ELISA, WB, IHC

**Recommended Dilutions:** IHC: 20-100;WB: 200-1000;ELISA: 5000-10000

**Host Species:** Rabbit

**Clonality:** Rabbit Polyclonal

**Isotype:** Immunogen-specific rabbit IgG

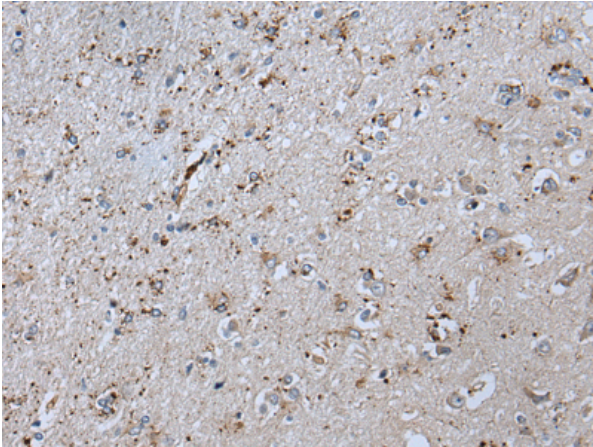
**Purification:** Antigen affinity purification

**Species Reactivity:** Human

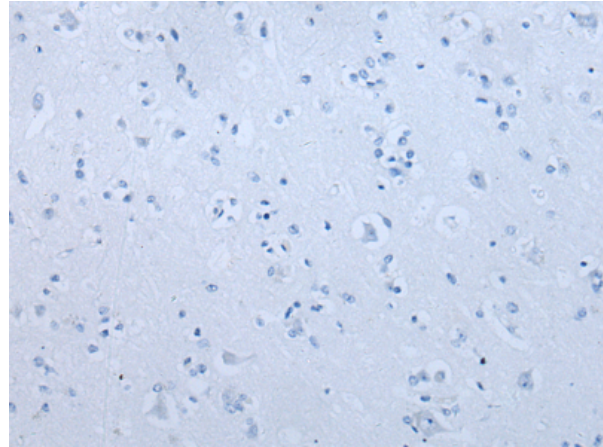
**Constituents:** PBS (without Mg<sup>2+</sup> and Ca<sup>2+</sup>), pH 7.4, 150 mM NaCl, 0.05% Sodium Azide and 40% glycerol

**Research Areas:** Metabolism, Cancer, Neuroscience, Cardiovascular

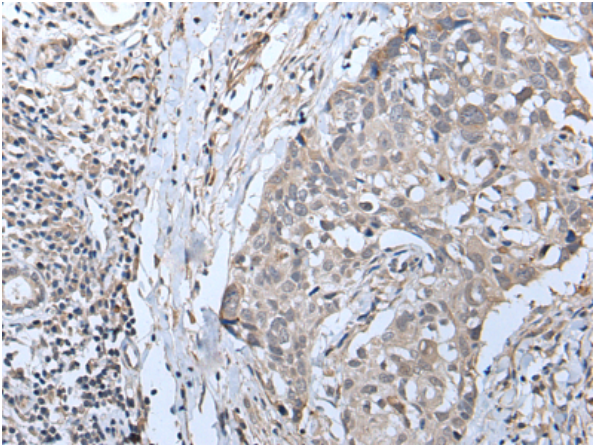
**Storage & Shipping:** Store at -20°C. Avoid repeated freezing and thawing



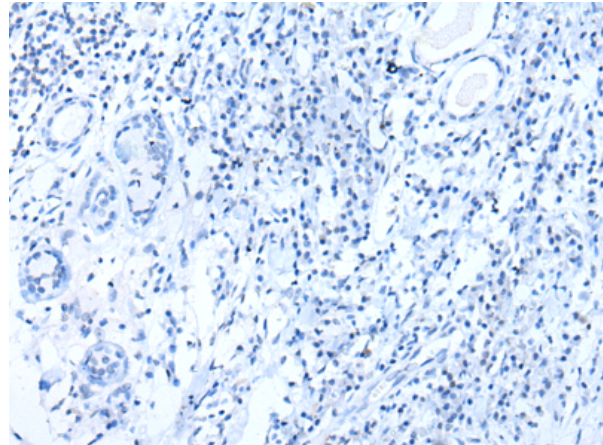
Immunohistochemistry analysis of paraffin embedded Human brain tissue using 221627(APOD Antibody) at a dilution of 1/30(Secreted).



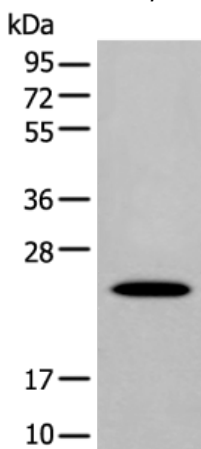
In comparison with the IHC on the left, the same paraffin-embedded Human brain tissue is first treated with the synthetic peptide and then with 221627(Anti-APOD Antibody) at dilution 1/30.



The image on the left is immunohistochemistry of paraffin-embedded Human lung cancer tissue using 221627(Anti-APOD Antibody) at a dilution of 1/30.



In comparison with the IHC on the left, the same paraffin-embedded Human lung cancer tissue is first treated with synthetic peptide and then with D263301(Anti-APOD Antibody) at dilution 1/30.



Gel: 12%SDS-PAGE, Lysate: 40 µg;  
Lane: Human liver tissue lysate;  
Primary antibody: 221627(APOD Antibody) at dilution 1/250;  
Secondary antibody: Goat anti rabbit IgG at 1/8000 dilution;  
Exposure time: 90 seconds



# Product Description

Pioneering GTPase and Oncogene Product Development since 2010

---