

APOER2 RABBIT MAB

Cat.#: N261859

Product Name: Anti-ApoER2 Rabbit Monoclonal Antibody

Synonyms: LRP8; APOER2; Low-density lipoprotein receptor-related protein 8; LRP-8; Apolipoprotein E receptor 2

UNIPROT ID: Q14114

Background: Cell surface receptor for Reelin (RELN) and apolipoprotein E (apoE)-containing ligands. LRP8 participates in transmitting the extracellular Reelin signal to intracellular signaling processes, by binding to DAB1 on its cytoplasmic tail.

Immunogen: A synthetic peptide of human ApoER2

Applications: WB,IP

Recommended Dilutions: WB: 1/500-1/1000 IP: 1/20

Host Species: Rabbit

Clonality: Rabbit Monoclonal

Clone ID: R03-1H8

MW: Calculated MW: 106 kDa; Observed MW: 130,106 kDa

Isotype: IgG

Purification: Affinity Purified

Species Reactivity: Human,Rat,Hamster

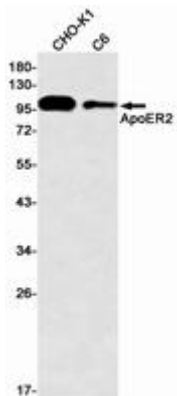
Conjugation: Unconjugated

Modification: Unmodified

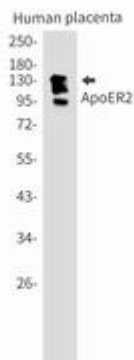
Constituents: PBS (without Mg²⁺ and Ca²⁺), pH 7.3 containing 50% glycerol, 0.5% BSA and 0.02% sodium azide

Research Areas: Neuroscience

Storage & Shipping: Store at -20°C. Avoid repeated freezing and thawing



Western blot analysis of ApoER2 in CHO-K1, C6 lysates using ApoER2 antibody.



Western blot analysis of ApoER2 in Human placenta lysates using ApoER2 antibody.