

## APOL1 RABBIT PAB

**Cat.#:** N226022

**Product Name:** Anti-ApoL1 Rabbit pAb

**Synonyms:** APOL1; APOL; Apolipoprotein L1; Apolipoprotein L; Apo-L; ApoL; Apolipoprotein L-I; ApoL-I

**UNIPROT ID:** O14791

**Background:** May play a role in lipid exchange and transport throughout the body. May participate in reverse cholesterol transport from peripheral cells to the liver.

**Immunogen:** A synthetic peptide of human Apolipoprotein L 1

**Applications:** WB,ICC/IF,FC,IP

**Recommended Dilutions:** WB: 1/500-1/1000 IF: 1/50-1/200 IP: 1/20 FC: 1/50-1/100

**Host Species:** Rabbit

**Clonality:** Rabbit Polyclonal

**Clone ID:** -

**MW:** Calculated MW: 44 kDa; Observed MW: 44 kDa

**Isotype:** IgG

**Purification:** Affinity Purified

**Species Reactivity:** Human

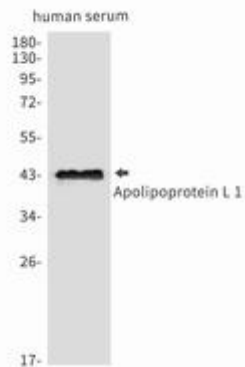
**Conjugation:** Unconjugated

**Modification:** Unmodified

**Constituents:** PBS (without Mg<sup>2+</sup> and Ca<sup>2+</sup>), pH 7.3 containing 50% glycerol, 0.5% BSA and 0.02% sodium azide

**Research Areas:** Cardiovascular

**Storage & Shipping:** Store at -20°C. Avoid repeated freezing and thawing



Western blot analysis of Apolipoprotein L1/APOL1 in Human serum lysates using Apol1 antibody.