

APOL4 RABBIT PAB

Cat.#: S221490

Product Name: Anti-APOL4 Rabbit Polyclonal Antibody

Synonyms: APOLIV; APOL-IV

UNIPROT ID: Q9BPW4 (Gene Accession - NP_085146)

Background: The protein encoded by this gene is a member of the apolipoprotein L family and may play a role in lipid exchange and transport throughout the body, as well as in reverse cholesterol transport from peripheral cells to the liver. Two transcript variants encoding two different isoforms have been found for this gene. Only one of the isoforms appears to be a secreted protein.

Immunogen: Synthetic peptide of human APOL4

Applications: ELISA, WB, IHC

Recommended Dilutions: IHC: Oct-50;WB: 200-1000;ELISA: 5000-10000

Host Species: Rabbit

Clonality: Rabbit Polyclonal

Isotype: Immunogen-specific rabbit IgG

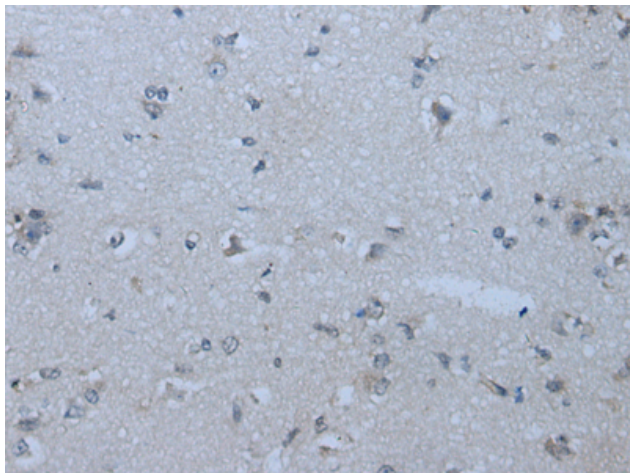
Purification: Antigen affinity purification

Species Reactivity: Human

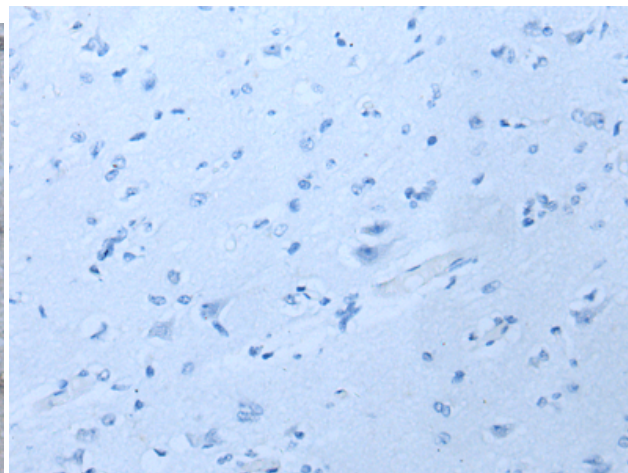
Constituents: PBS (without Mg²⁺ and Ca²⁺), pH 7.4, 150 mM NaCl, 0.05% Sodium Azide and 40% glycerol

Research Areas: Cardiovascular

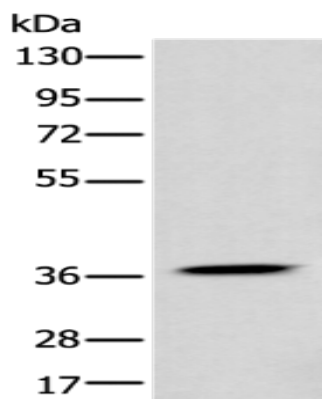
Storage & Shipping: Store at -20°C. Avoid repeated freezing and thawing



Immunohistochemistry analysis of paraffin embedded Human brain tissue using 221490 (APOL4 Antibody) at a dilution of 1/35 (Cytoplasm).



In comparison with the IHC on the left, the same paraffin-embedded Human brain tissue is first treated with the synthetic peptide and then with 221490 (Anti-APOL4 Antibody) at dilution 1/35.



Gel: 8% SDS-PAGE, Lysate: 40 μ g;
Lane: HL60 cell lysate;
Primary antibody: 221490 (APOL4 Antibody) at dilution 1/400;
Secondary antibody: Goat anti rabbit IgG at 1/8000 dilution;
Exposure time: 30 seconds