

## APOL6 RABBIT PAB

**Cat.#:** S220387

**Product Name:** Anti-APOL6 Rabbit Polyclonal Antibody

**Synonyms:** APOLVI; APOL-VI

**UNIPROT ID:** Q9BWW8 (Gene Accession - NP\_085144 )

**Background:** This gene is a member of the apolipoprotein L gene family. The encoded protein is found in the cytoplasm, where it may affect the movement of lipids or allow the binding of lipids to organelles. Widely expressed; highly expressed in the uterus, fetal brain and spinal cord, also detected in heart, liver, lung, colon, spleen, thymus, prostate, placenta, adrenal gland, salivary and mammary gland.

**Immunogen:** Synthetic peptide of human APOL6

**Applications:** ELISA, IHC

**Recommended Dilutions:** IHC: 50-200; ELISA: 2000-5000

**Host Species:** Rabbit

**Clonality:** Rabbit Polyclonal

**Isotype:** Immunogen-specific rabbit IgG

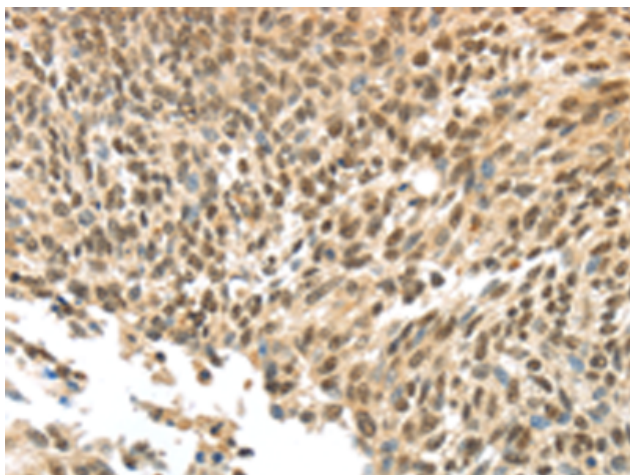
**Purification:** Antigen affinity purification

**Species Reactivity:** Human

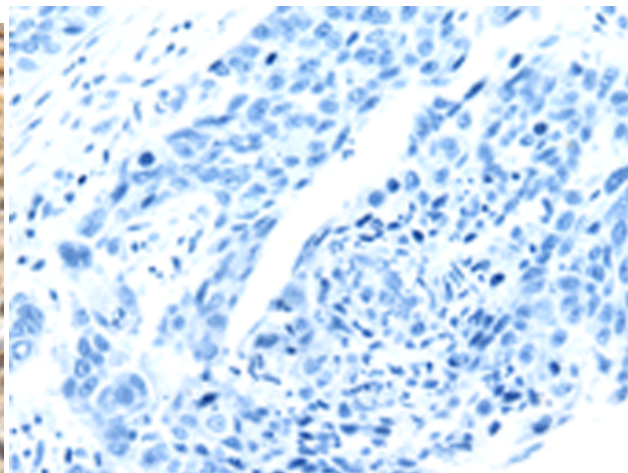
**Constituents:** PBS (without Mg<sup>2+</sup> and Ca<sup>2+</sup>), pH 7.4, 150 mM NaCl, 0.05% Sodium Azide and 40% glycerol

**Research Areas:** Cancer, Metabolism, Cardiovascular

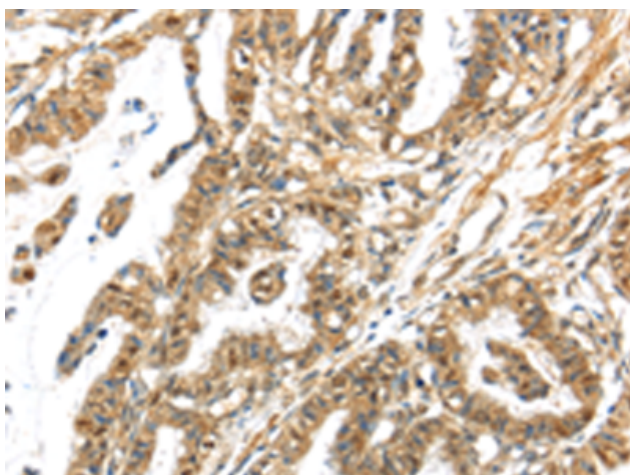
**Storage & Shipping:** Store at -20°C. Avoid repeated freezing and thawing



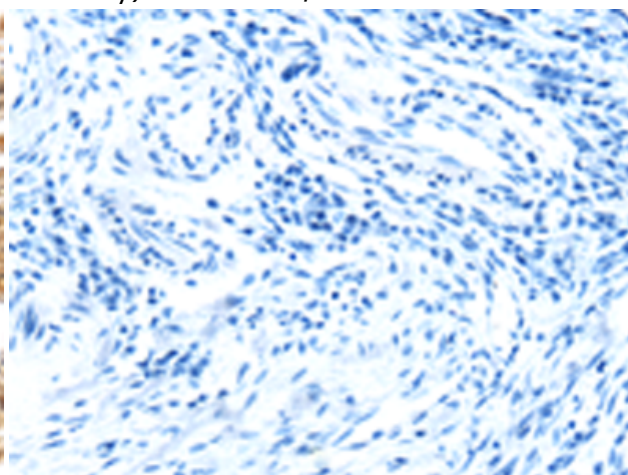
Immunohistochemistry analysis of paraffin embedded Human tonsil tissue using 220387 (APOL6 Antibody) at a dilution of 1/60 (Cytoplasm).



In comparison with the IHC on the left, the same paraffin-embedded Human tonsil tissue is first treated with the synthetic peptide and then with 220387 (Anti-APOL6 Antibody) at dilution 1/60.



The image on the left is immunohistochemistry of paraffin-embedded Human thyroid cancer tissue using 220387 (Anti-APOL6 Antibody) at a dilution of 1/60.



In comparison with the IHC on the left, the same paraffin-embedded Human thyroid cancer tissue is first treated with synthetic peptide and then with D261463 (Anti-APOL6 Antibody) at dilution 1/60.