

**APP(3D7) IGG1 CHIMERIC MAB****Cat.#:** 28565**Product Name:** Anti-APP(3D7) IgG1 Chimeric Monoclonal Antibody**Synonyms:** AAA;ABETA;ABPP;AD1;APPI;CTFgamma;CVAP;PN-II;PN2;preA4**Description:** Anti-APP antibody(3D7) IgG1 Chimeric Monoclonal Antibody

**Background:** This gene encodes a cell surface receptor and transmembrane precursor protein that is cleaved by secretases to form a number of peptides. Some of these peptides are secreted and can bind to the acetyltransferase complex APBB1/TIP60 to promote transcriptional activation, while others form the protein basis of the amyloid plaques found in the brains of patients with Alzheimer disease. In addition, two of the peptides are antimicrobial peptides, having been shown to have bacteriocidal and antifungal activities. Mutations in this gene have been implicated in autosomal dominant Alzheimer disease and cerebroarterial amyloidosis (cerebral amyloid angiopathy). Multiple transcript variants encoding several different isoforms have been found for this gene. [provided by RefSeq, Aug 2014]

**Applications:** Flow Cyt**Recommended Dilutions:** Flow Cyt 1/100**Host Species:** Rabbit**Isotype:** Rabbit/Human Fc chimeric IgG1**Purification:** Purified from cell culture supernatant by affinity chromatography**Species Reactivity:** Human APP**Constituents:** Lyophilized from sterile PBS, pH 7.4. 5 % – 8% trehalose is added as protectants before lyophilization.**Storage & Shipping:** Store at -20°C to -80°C for 12 months in lyophilized form. After reconstitution, if not intended for use within a month, aliquot and store at -80°C (Avoid repeated freezing and thawing).

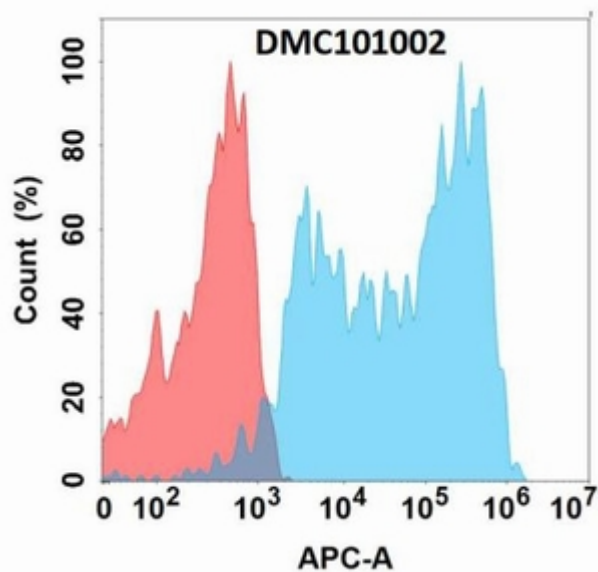


Figure 1. Flow cytometry analysis with Anti-APP (3D7) mAb on Expi293 cells transfected with human APP (Blue histogram) or Expi293 transfected with irrelevant protein (Red histogram).