

## APPL RABBIT MAB

**Cat.#:** N261861

**Product Name:** Anti-APPL Rabbit Monoclonal Antibody

**Synonyms:** APPL1; APPL; DIP13A; KIAA1428; DCC-interacting protein 13-alpha; Dip13-alpha; Adapter protein containing PH domain; PTB domain and leucine zipper motif 1

**UNIPROT ID:** Q9UKG1

**Background:** Adapter protein that interacts with proteins involved in different cellular signaling pathways. Required for the regulation of cell proliferation in response to extracellular signals from an early endosomal compartment. Links Rab5 to nuclear signal transduction. Involved in the regulation of the insulin receptor signaling pathway.

**Immunogen:** A synthetic peptide of human APPL

**Applications:** WB,IHC-P

**Recommended Dilutions:** WB: 1/500-1/1000 IHC: 1/50-1/100

**Host Species:** Rabbit

**Clonality:** Rabbit Monoclonal

**Clone ID:** R05-8D5

**MW:** Calculated MW: 80 kDa; Observed MW: 80 kDa

**Isotype:** IgG

**Purification:** Affinity Purified

**Species Reactivity:** Human,Mouse,Rat

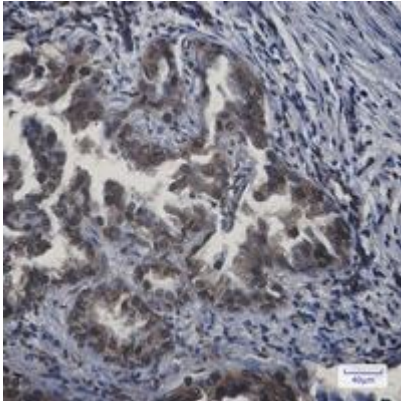
**Conjugation:** Unconjugated

**Modification:** Unmodified

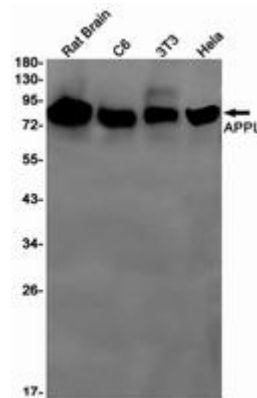
**Constituents:** PBS (without Mg<sup>2+</sup> and Ca<sup>2+</sup>), pH 7.3 containing 50% glycerol, 0.5% BSA and 0.02% sodium azide

**Research Areas:** Cell Biology

**Storage & Shipping:** Store at -20°C. Avoid repeated freezing and thawing



Immunohistochemistry analysis of paraffin-embedded Human lung cancer using APPL antibody. High-pressure and temperature Sodium Citrate pH 6.0 was used for antigen retrieval.



Western blot analysis of APPL in rat Brain, C6, 3T3, HeLa lysates using APPL antibody.