

## AQP1 RABBIT PAB

**Cat.#:** S219727

**Product Name:** Anti-AQP1 Rabbit Polyclonal Antibody

**Synonyms:** CO; CHIP28; AQP-CHIP

**UNIPROT ID:** P29972 (Gene Accession - NP\_932766 )

**Background:** Aquaporins are a family of small integral membrane proteins related to the major intrinsic protein (MIP or AQP0). This gene encodes an aquaporin which functions as a molecular water channel protein. It is a homotetramer with 6 bilayer spanning domains and N-glycosylation sites. The protein physically resembles channel proteins and is abundant in erythrocytes and renal tubes. The gene encoding this aquaporin is a possible candidate for disorders involving imbalance in ocular fluid movement.

**Immunogen:** Synthetic peptide of human AQP1

**Applications:** ELISA, WB, IHC

**Recommended Dilutions:** IHC: 25-100;WB: 500-2000;ELISA: 2000-5000

**Host Species:** Rabbit

**Clonality:** Rabbit Polyclonal

**Isotype:** Immunogen-specific rabbit IgG

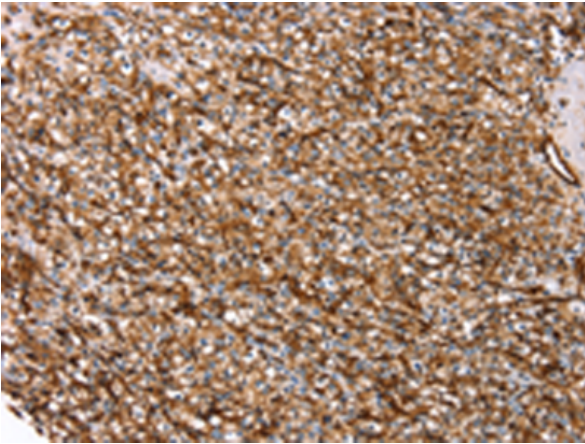
**Purification:** Antigen affinity purification

**Species Reactivity:** Human, Mouse, Rat

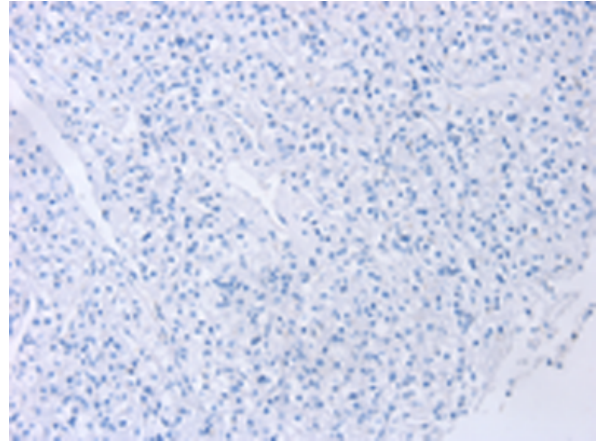
**Constituents:** PBS (without Mg<sup>2+</sup> and Ca<sup>2+</sup>), pH 7.4, 150 mM NaCl, 0.05% Sodium Azide and 40% glycerol

**Research Areas:** Metabolism

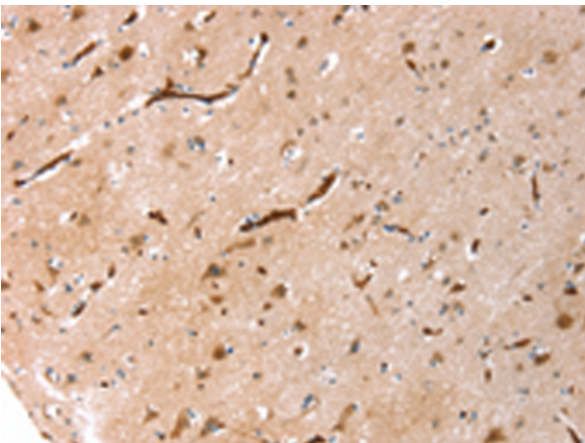
**Storage & Shipping:** Store at -20°C. Avoid repeated freezing and thawing



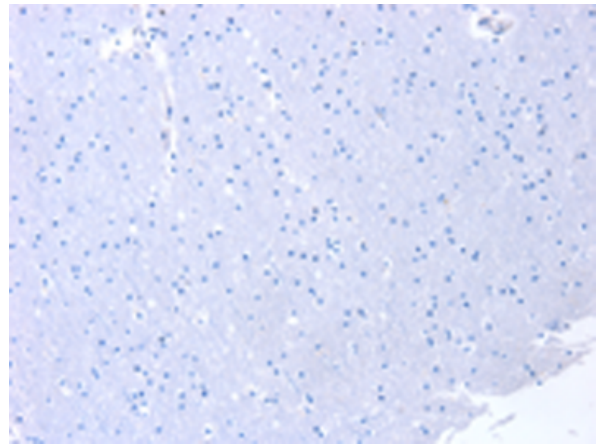
Immunohistochemistry analysis of paraffin embedded Human prostate cancer tissue using 219727(AQPI Antibody) at a dilution of 1/20(Cytoplasm and Cell membrane).



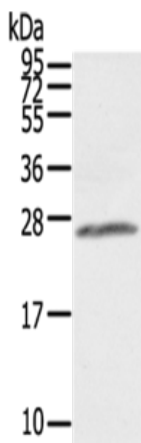
In comparison with the IHC on the left, the same paraffin-embedded Human prostate cancer tissue is first treated with the synthetic peptide and then with 219727(Anti-AQPI Antibody) at dilution 1/20.



The image on the left is immunohistochemistry of paraffin-embedded Human brain tissue using 219727(Anti-AQPI Antibody) at a dilution of 1/20.



In comparison with the IHC on the left, the same paraffin-embedded Human brain tissue is first treated with synthetic peptide and then with D260222(Anti-AQPI Antibody) at dilution 1/20.



Gel: 12%SDS-PAGE, Lysate: 40 µg;  
Lane: Human normal kidney tissue;  
Primary antibody: 219727(AQPI Antibody) at dilution 1/300;  
Secondary antibody: Goat anti rabbit IgG at 1/8000 dilution;  
Exposure time: 5 seconds



# Product Description

Pioneering GTPase and Oncogene Product Development since 2010

---