

AQP11 RABBIT PAB

Cat.#: S214950

Product Name: Anti-AQP11 Rabbit Polyclonal Antibody

Synonyms: AQPX1

UNIPROT ID: Q8NBQ7 (Gene Accession - NP_766627)

Background: Aquaporins facilitate the transport of water and small neutral solutes across cell membranes.

Immunogen: Synthetic peptide of human AQP11

Applications: ELISA, IHC

Recommended Dilutions: IHC: 20-100; ELISA: 2000-5000

Host Species: Rabbit

Clonality: Rabbit Polyclonal

Isotype: Immunogen-specific rabbit IgG

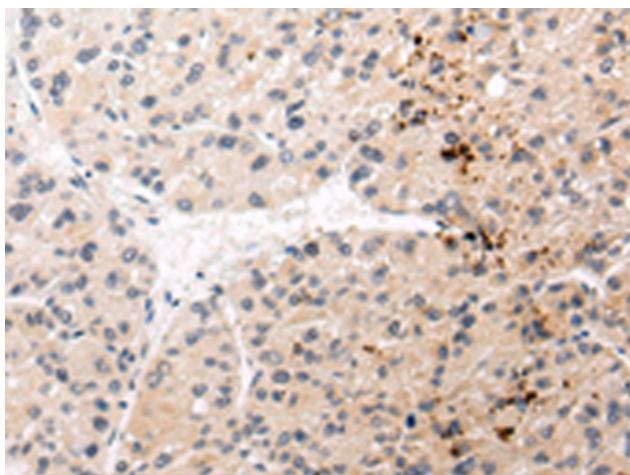
Purification: Antigen affinity purification

Species Reactivity: Human

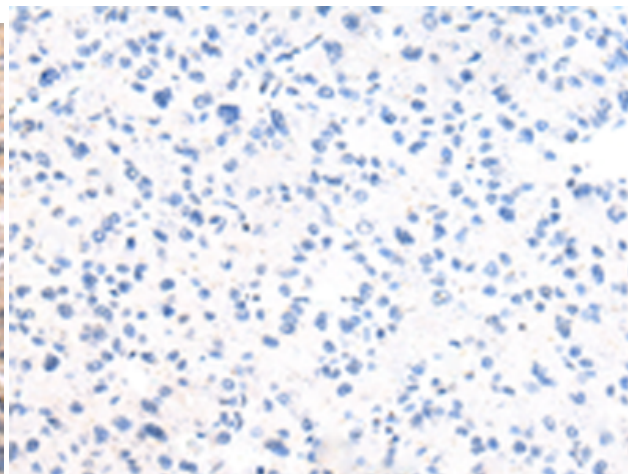
Constituents: PBS (without Mg²⁺ and Ca²⁺), pH 7.4, 150 mM NaCl, 0.05% Sodium Azide and 40% glycerol

Research Areas: Metabolism

Storage & Shipping: Store at -20°C. Avoid repeated freezing and thawing



Immunohistochemistry analysis of paraffin embedded Human liver cancer tissue using 214950(AQP11 Antibody) at a dilution of 1/30(Cytoplasm).



In comparison with the IHC on the left, the same paraffin-embedded Human liver cancer tissue is first treated with the synthetic peptide and then with 214950(Anti-AQP11 Antibody) at dilution 1/30.