

AQUAPORIN 1 RABBIT MAB

Cat.#: N261863

Product Name: Anti-Aquaporin 1 Rabbit Monoclonal Antibody

Synonyms: AQP1; CHIP28; Aquaporin-1; AQP-1; Aquaporin-CHIP; Urine water channel; Water channel protein for red blood cells and kidney proximal tubule

UNIPROT ID: P29972

Background: Forms a water-specific channel that provides the plasma membranes of red cells and kidney proximal tubules with high permeability to water, thereby permitting water to move in the direction of an osmotic gradient.

Immunogen: A synthetic peptide of human Aquaporin 1

Applications: WB,IHC-P

Recommended Dilutions: WB: 1/500-1/1000 IHC: 1/50-1/100

Host Species: Rabbit

Clonality: Rabbit Monoclonal

Clone ID: R03-7G5

MW: Calculated MW: 29 kDa; Observed MW: 29 kDa

Isotype: IgG

Purification: Affinity Purified

Species Reactivity: Human,Rat

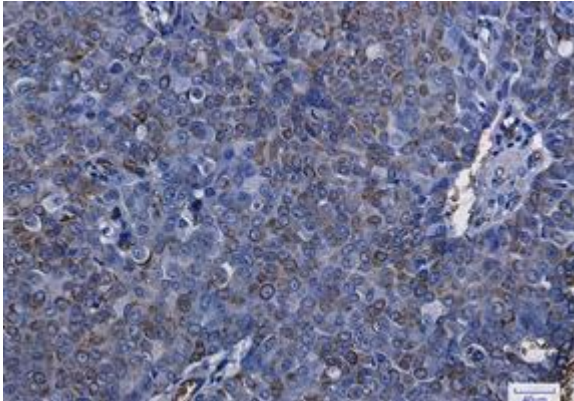
Conjugation: Unconjugated

Modification: Unmodified

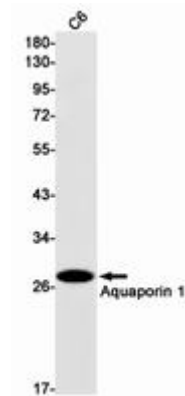
Constituents: PBS (without Mg²⁺ and Ca²⁺), pH 7.3 containing 50% glycerol, 0.5% BSA and 0.02% sodium azide

Research Areas: Cell Biology

Storage & Shipping: Store at -20°C. Avoid repeated freezing and thawing



Immunohistochemistry analysis of paraffin-embedded Human breast cancer using Aquaporin 1 antibody. High-pressure and temperature Sodium Citrate pH 6.0 was used for antigen retrieval.



Western blot analysis of Aquaporin 1 in C6 lysates using Aquaporin 1 antibody.