

ARC RABBIT PAB

Cat.#: S210806

Product Name: Anti-ARC Rabbit Polyclonal Antibody

Synonyms: hArc; Arg3.1

UNIPROT ID: Q7LC44 (Gene Accession - BC012321)

Background: Predicted to enable mRNA binding activity. Involved in cell migration; cytoskeleton organization; and regulation of cell morphogenesis. Located in cytoplasm and plasma membrane.

Immunogen: Fusion protein of human ARC

Applications: ELISA, IHC

Recommended Dilutions: IHC: 50-200; ELISA: 5000-10000

Host Species: Rabbit

Clonality: Rabbit Polyclonal

Isotype: Immunogen-specific rabbit IgG

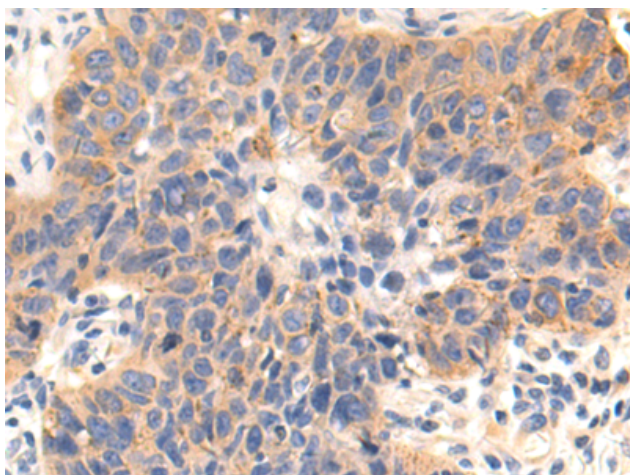
Purification: Antigen affinity purification

Species Reactivity: Human, Mouse, Rat

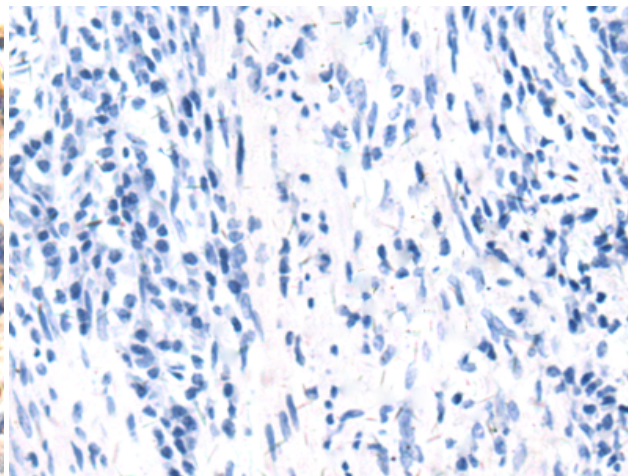
Constituents: PBS (without Mg²⁺ and Ca²⁺), pH 7.4, 150 mM NaCl, 0.05% Sodium Azide and 40% glycerol

Research Areas: Neuroscience

Storage & Shipping: Store at -20°C. Avoid repeated freezing and thawing



Immunohistochemistry analysis of paraffin embedded Human thyroid cancer tissue using 210806(ARC Antibody) at a dilution of 1/80(Cytoplasm).



In comparison with the IHC on the left, the same paraffin-embedded Human thyroid cancer tissue is first treated with the fusion protein and then with 210806(Anti-ARC Antibody) at dilution 1/80.