

ARF5 RABBIT PAB

Cat.#: S219525

Product Name: Anti-ARF5 Rabbit Polyclonal Antibody

Synonyms:

UNIPROT ID: P84085 (Gene Accession - BC003043)

Background: This gene is a member of the human ADP-ribosylation factor (ARF) gene family. These genes encode small guanine nucleotide-binding proteins that stimulate the ADP-ribosyltransferase activity of cholera toxin and play a role in vesicular trafficking and as activators of phospholipase D. The gene products include 6 ARF proteins and 11 ARF-like proteins and constitute 1 family of the RAS superfamily. The ARF proteins are categorized as class I (ARF1, ARF2, and ARF3), class II (ARF4 and ARF5) and class III (ARF6). The members of each class share a common gene organization.

Immunogen: Fusion protein of human ARF5

Applications: ELISA, IHC

Recommended Dilutions: IHC: 50-200; ELISA: 5000-10000

Host Species: Rabbit

Clonality: Rabbit Polyclonal

Isotype: Immunogen-specific rabbit IgG

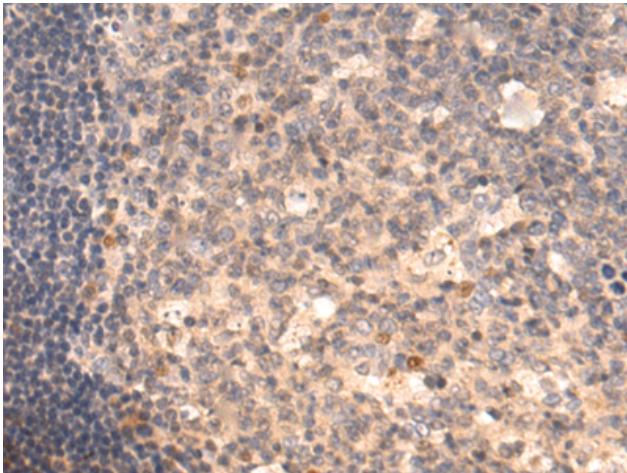
Purification: Antigen affinity purification

Species Reactivity: Human, Mouse, Rat

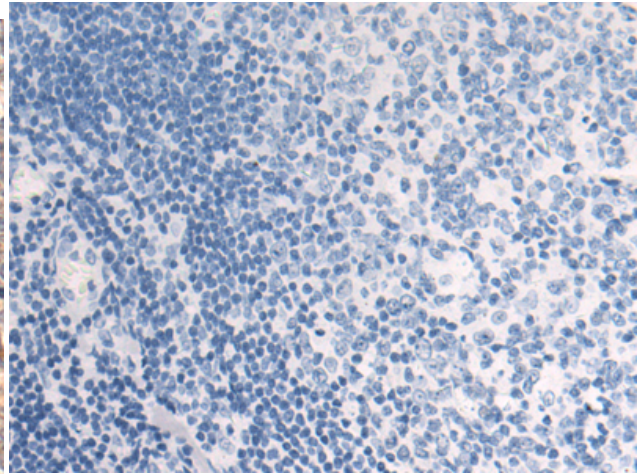
Constituents: PBS (without Mg²⁺ and Ca²⁺), pH 7.4, 150 mM NaCl, 0.05% Sodium Azide and 40% glycerol

Research Areas: Signal Transduction

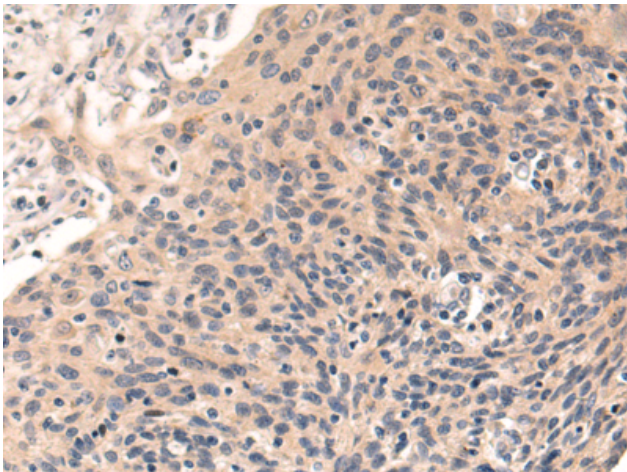
Storage & Shipping: Store at -20°C. Avoid repeated freezing and thawing



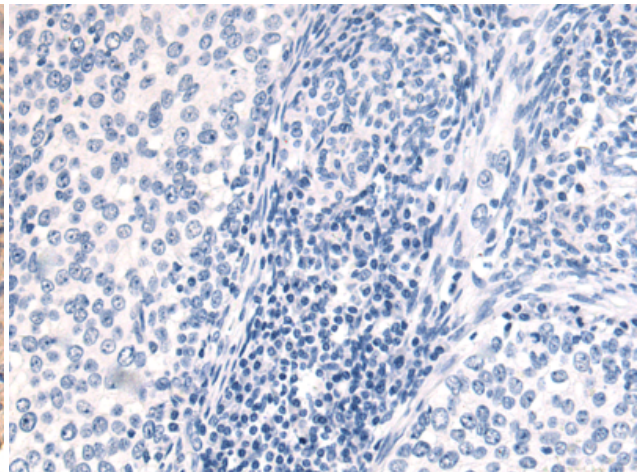
Immunohistochemistry analysis of paraffin embedded Human tonsil tissue using 219525(ARF5 Antibody) at a dilution of 1/70(Golgi apparatus).



In comparison with the IHC on the left, the same paraffin-embedded Human tonsil tissue is first treated with the fusion protein and then with 219525(Anti-ARF5 Antibody) at dilution 1/70.



The image on the left is immunohistochemistry of paraffin-embedded Human cervical cancer tissue using 219525(Anti-ARF5 Antibody) at a dilution of 1/70.



In comparison with the IHC on the left, the same paraffin-embedded Human cervical cancer tissue is first treated with fusion protein and then with D227511(Anti-ARF5 Antibody) at dilution 1/70.