

## ARHGAP1 RABBIT PAB

**Cat.#:** S217033

**Product Name:** Anti-ARHGAP1 Rabbit Polyclonal Antibody

**Synonyms:** RHOGAP; RHOGAPI; CDC42GAP; p50rhoGAP

**UNIPROT ID:** Q07960 (Gene Accession - BC018118 )

**Background:** This gene encodes a member of a large family of proteins that activate Rho-type guanosine triphosphate (GTP) metabolizing enzymes. The encoded protein contains a SRC homology 3 domain and interacts with Bcl-2-associated protein family members. GTPase activator for the Rho, Rac and Cdc42 proteins, converting them to the putatively inactive GDP-bound state. Cdc42 seems to be the preferred substrate.

**Immunogen:** Fusion protein of human ARHGAP1

**Applications:** ELISA, IHC

**Recommended Dilutions:** IHC: 15-50; ELISA: 1000-2000

**Host Species:** Rabbit

**Clonality:** Rabbit Polyclonal

**Isotype:** Immunogen-specific rabbit IgG

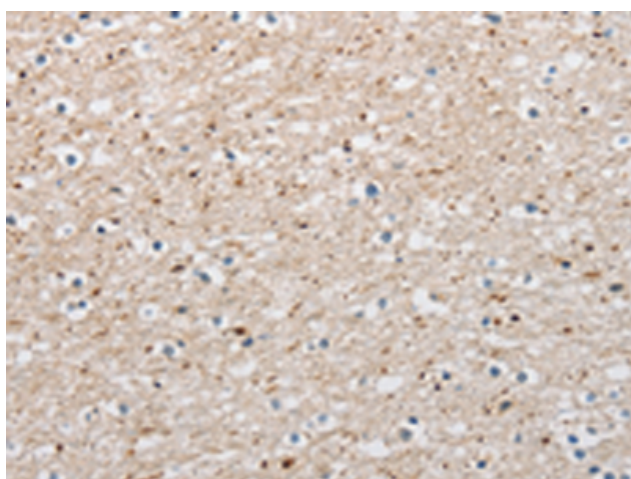
**Purification:** Antigen affinity purification

**Species Reactivity:** Human, Mouse

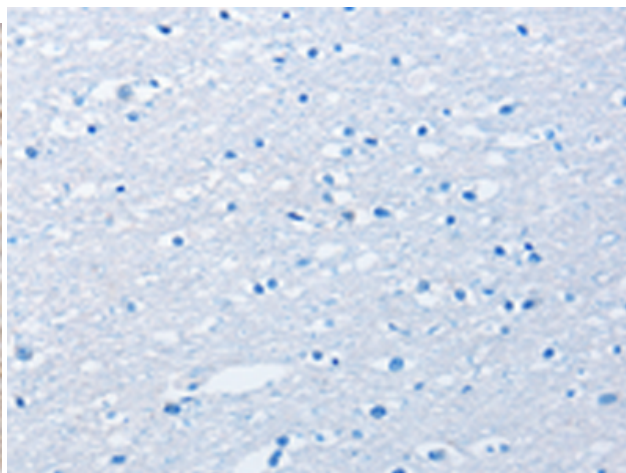
**Constituents:** PBS (without Mg<sup>2+</sup> and Ca<sup>2+</sup>), pH 7.4, 150 mM NaCl, 0.05% Sodium Azide and 40% glycerol

**Research Areas:** Signal Transduction

**Storage & Shipping:** Store at -20°C. Avoid repeated freezing and thawing



Immunohistochemistry analysis of paraffin embedded Human brain tissue using 217033(ARHGAP1 Antibody) at a dilution of 1/25(Cytoplasm).



In comparison with the IHC on the left, the same paraffin-embedded Human brain tissue is first treated with the fusion protein and then with 217033(Anti-ARHGAP1 Antibody) at dilution 1/25.