

## ARHGDI2 RABBIT PAB

**Cat.#:** S217473

**Product Name:** Anti-ARHGDI2 Rabbit Polyclonal Antibody

**Synonyms:** GDIA1; NPHS8; RHOGDI; RHOGDI-1; HEL-S-47e

**UNIPROT ID:** P52565 (Gene Accession - BC005851)

**Background:** Aplysia Ras-related homologs (ARHs), also called Rho genes, belong to the RAS gene superfamily encoding small guanine nucleotide exchange (GTP/GDP) factors. The ARH proteins may be kept in the inactive, GDP-bound state by interaction with GDP dissociation inhibitors, such as ARHGDI2

**Immunogen:** Fusion protein of human ARHGDI2

**Applications:** ELISA, WB, IHC

**Recommended Dilutions:** IHC: 100-300;WB: 500-2000;ELISA: 2000-5000

**Host Species:** Rabbit

**Clonality:** Rabbit Polyclonal

**Isotype:** Immunogen-specific rabbit IgG

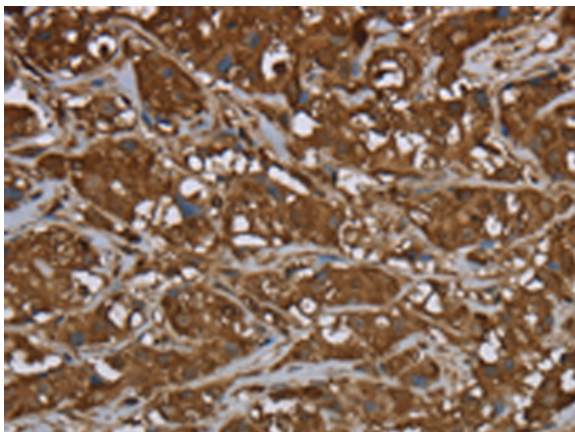
**Purification:** Antigen affinity purification

**Species Reactivity:** Human, Mouse, Rat

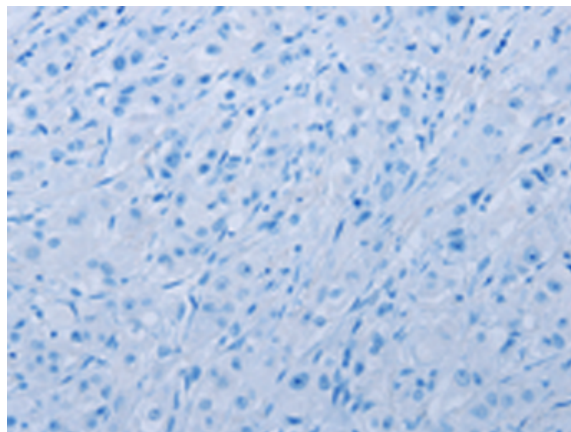
**Constituents:** PBS (without Mg<sup>2+</sup> and Ca<sup>2+</sup>), pH 7.4, 150 mM NaCl, 0.05% Sodium Azide and 40% glycerol

**Research Areas:** Signal Transduction

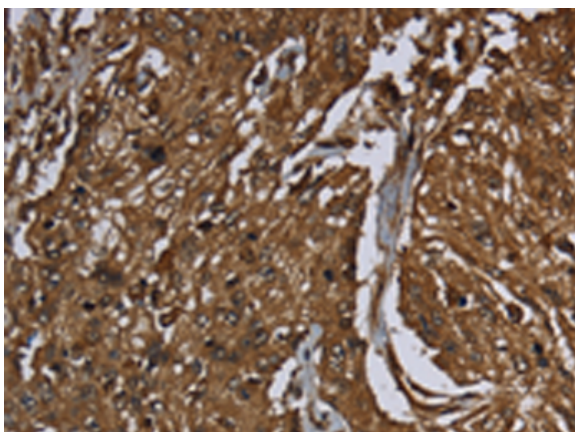
**Storage & Shipping:** Store at -20°C. Avoid repeated freezing and thawing



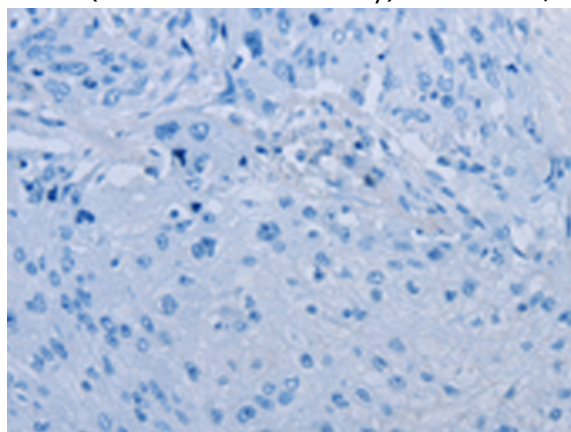
Immunohistochemistry analysis of paraffin embedded Human breast cancer tissue using 217473(ARHGDI2 Antibody) at a dilution of 1/50(Cytoplasm).



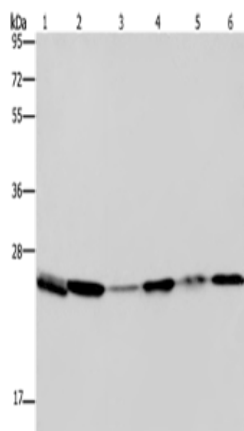
In comparison with the IHC on the left, the same paraffin-embedded Human breast cancer tissue is first treated with the fusion protein and then with 217473(Anti-ARHGDI2 Antibody) at dilution 1/50.



The image on the left is immunohistochemistry of paraffin-embedded Human esophagus cancer tissue using 217473(Anti-ARHGDI2 Antibody) at a dilution of 1/50.



In comparison with the IHC on the left, the same paraffin-embedded Human esophagus cancer tissue is first treated with fusion protein and then with D222413(Anti-ARHGDI2 Antibody) at dilution 1/50.



Gel: 10%SDS-PAGE, Lysate: 40 µg;  
Lane 1-6: Mouse spleen tissue, A375 cells, A549 cells, HT29 cells, mouse lung tissue, Hela cells;  
Primary antibody: 217473(ARHGDI2 Antibody) at dilution 1/400;  
Secondary antibody: Goat anti rabbit IgG at 1/8000 dilution;  
Exposure time: 10 seconds



# Product Description

Pioneering GTPase and Oncogene Product Development since 2010

---