

ARHGEF7 RABBIT PAB

Cat.#: S217040

Product Name: Anti-ARHGEF7 Rabbit Polyclonal Antibody

Synonyms: P50; P85; PAK3; PIXB; COOL1; P50BP; COOL-1; P85SPR; BETA-PIX; P85COOL1; Nbla10314

UNIPROT ID: Q14155 (Gene Accession - BC060776)

Background: Rho GTPases play a fundamental role in numerous cellular processes triggered by extracellular stimuli that work through G protein coupled receptors. The encoded protein belongs to a family of cytoplasmic proteins that activate the Ras-like family of Rho proteins by exchanging bound GDP for GTP. It forms a complex with the small GTP binding protein Rac1 and recruits Rac1 to membrane ruffles and to focal adhesions. This protein can induce membrane ruffling. Multiple alternatively spliced transcript variants encoding different isoforms have been described for this gene.

Immunogen: Fusion protein of human ARHGEF7

Applications: ELISA, WB, IHC

Recommended Dilutions: IHC: 50-200;WB: 500-2000;ELISA: 2000-5000

Host Species: Rabbit

Clonality: Rabbit Polyclonal

Isotype: Immunogen-specific rabbit IgG

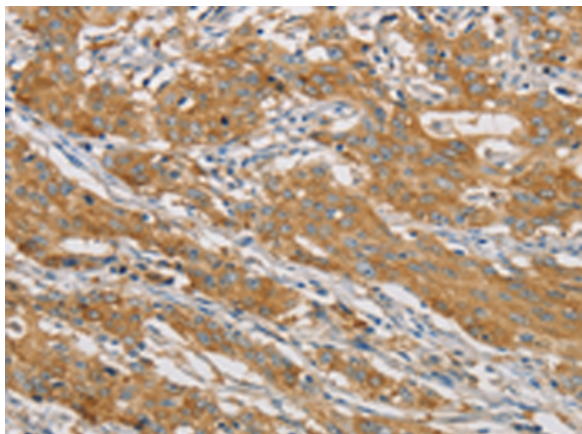
Purification: Antigen affinity purification

Species Reactivity: Human, Mouse, Rat

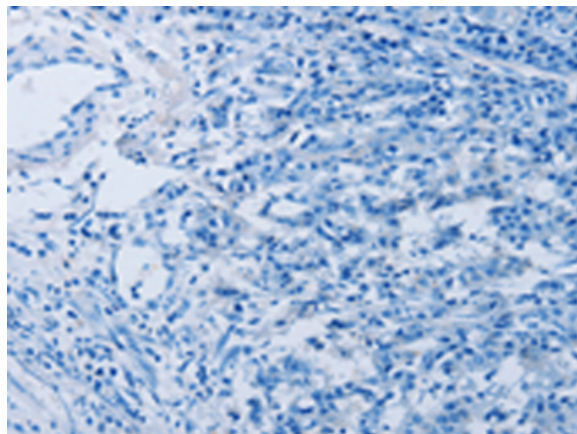
Constituents: PBS (without Mg²⁺ and Ca²⁺), pH 7.4, 150 mM NaCl, 0.05% Sodium Azide and 40% glycerol

Research Areas: Signal Transduction

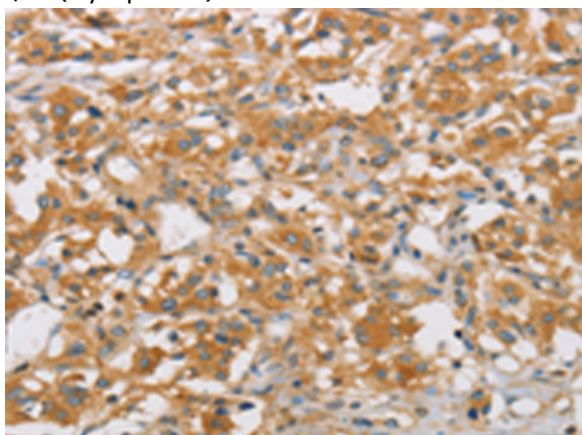
Storage & Shipping: Store at -20°C. Avoid repeated freezing and thawing



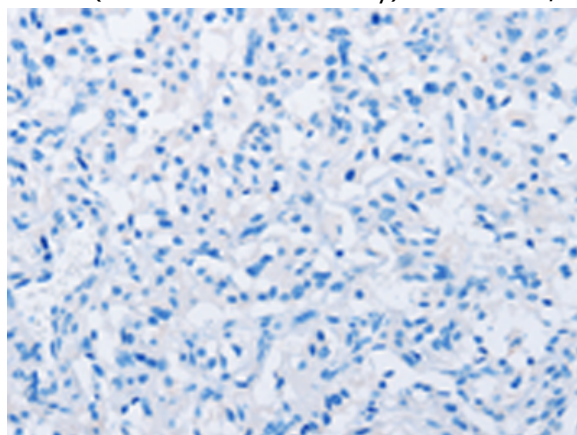
Immunohistochemistry analysis of paraffin embedded Human gastric cancer tissue using 217040 (ARHGEF7 Antibody) at a dilution of 1/40 (Cytoplasm).



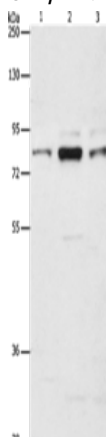
In comparison with the IHC on the left, the same paraffin-embedded Human gastric cancer tissue is first treated with the fusion protein and then with 217040 (Anti-ARHGEF7 Antibody) at dilution 1/40.



The image on the left is immunohistochemistry of paraffin-embedded Human thyroid cancer tissue using 217040 (Anti-ARHGEF7 Antibody) at a dilution of 1/40.



In comparison with the IHC on the left, the same paraffin-embedded Human thyroid cancer tissue is first treated with fusion protein and then with 217040 (Anti-ARHGEF7 Antibody) at dilution 1/40.



Gel: 8%SDS-PAGE, Lysate: 40 μ g;
 Lane 1-3: Human brain malignant glioma tissue, A172 cells, 293T cells;
 Primary antibody: 217040 (ARHGEF7 Antibody) at dilution 1/800;
 Secondary antibody: Goat anti rabbit IgG at 1/8000 dilution;
 Exposure time: 3 minutes



Product Description

Pioneering GTPase and Oncogene Product Development since 2010
