

ARHGEF9 RABBIT PAB

Cat.#: S217041

Product Name: Anti-ARHGEF9 Rabbit Polyclonal Antibody

Synonyms: PEM2; EIEE8; PEM-2; HPEM-2; COLLYBISTIN

UNIPROT ID: O43307 (Gene Accession - BC117406)

Background: The protein encoded by this gene is a Rho-like GTPase that switches between the active (GTP-bound) state and inactive (GDP-bound) state to regulate CDC42 and other genes. Defects in this gene are a cause of startle disease with epilepsy (STHEE), also known as hyperekplexia with epilepsy. Three transcript variants encoding different isoforms have been found for this gene.

Immunogen: Fusion protein of human ARHGEF9

Applications: ELISA, WB, IHC

Recommended Dilutions: IHC: 50-200;WB: 1000-5000;ELISA: 2000-10000

Host Species: Rabbit

Clonality: Rabbit Polyclonal

Isotype: Immunogen-specific rabbit IgG

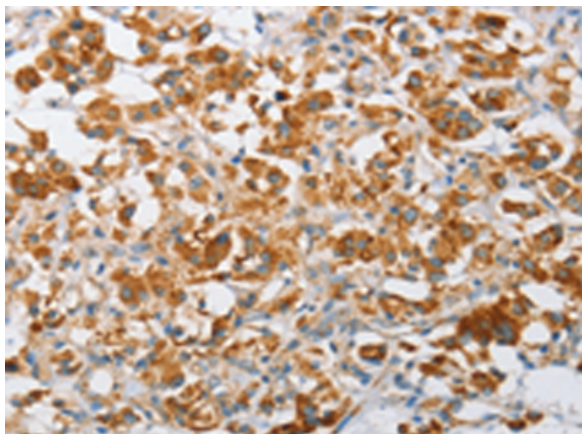
Purification: Antigen affinity purification

Species Reactivity: Human, Mouse, Rat

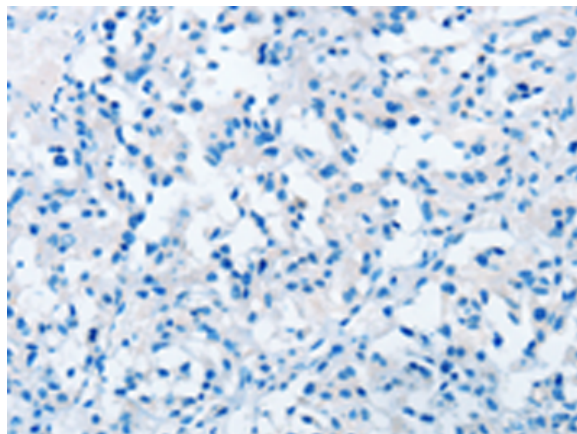
Constituents: PBS (without Mg²⁺ and Ca²⁺), pH 7.4, 150 mM NaCl, 0.05% Sodium Azide and 40% glycerol

Research Areas: Signal Transduction

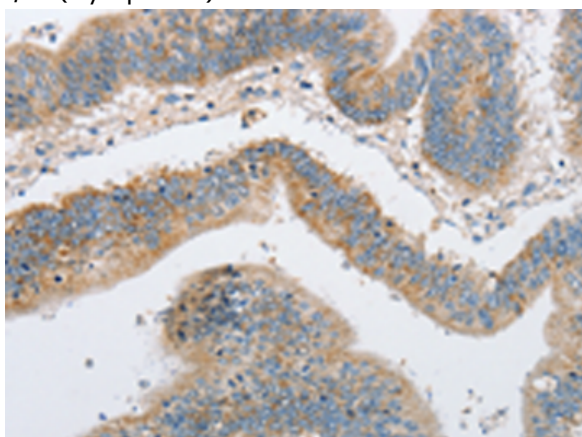
Storage & Shipping: Store at -20°C. Avoid repeated freezing and thawing



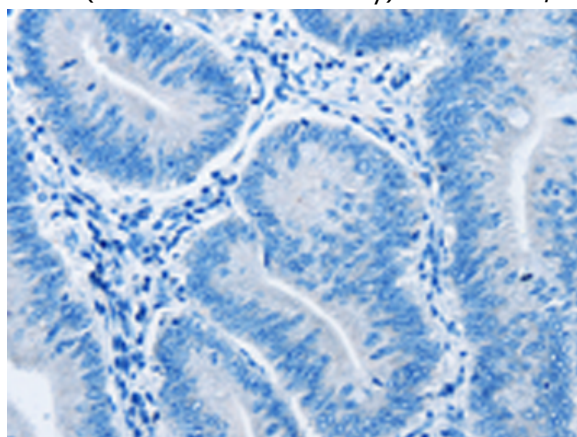
Immunohistochemistry analysis of paraffin embedded Human thyroid cancer tissue using 217041 (ARHGEF9 Antibody) at a dilution of 1/50 (Cytoplasm).



In comparison with the IHC on the left, the same paraffin-embedded Human thyroid cancer tissue is first treated with the fusion protein and then with 217041 (Anti-ARHGEF9 Antibody) at dilution 1/50.



The image on the left is immunohistochemistry of paraffin-embedded Human colon cancer tissue using 217041 (Anti-ARHGEF9 Antibody) at a dilution of 1/50.



In comparison with the IHC on the left, the same paraffin-embedded Human colon cancer tissue is first treated with fusion protein and then with D221693 (Anti-ARHGEF9 Antibody) at dilution 1/50.



Gel: 8% SDS-PAGE, Lysate: 40 μ g;
Lane 1-2: Mouse heart tissue, human fetal brain tissue;
Primary antibody: 217041 (ARHGEF9 Antibody) at dilution 1/950;
Secondary antibody: Goat anti rabbit IgG at 1/8000 dilution;
Exposure time: 5 seconds



Product Description

Pioneering GTPase and Oncogene Product Development since 2010
