

ARIH1 RABBIT PAB

Cat.#: S215541

Product Name: Anti-ARIH1 Rabbit Polyclonal Antibody

Synonyms: ARI; HARI; HHARI; UBCH7BP

UNIPROT ID: Q9Y4X5 (Gene Accession - NP_005735)

Background: ARIH1 (ariadne homolog), also known as ubiquitin conjugating enzyme E2 binding protein 1, ARI, HARI, HHARI (human homolog of Drosophila ariadne), MOP-6 (monocyte protein 6) or UBCH7BP (UBCH7 binding protein), is a 557 amino acid cytoplasmic protein. Expressed in a wide variety of tissues, ARIH1 contains two RING-type zinc fingers and one IBR (in-between RING fingers)-type domain. ARIH1 is believed to be involved in protein degradation and protein translation. ARIH1 interacts with UBCH7 and is thought to function as an E3 ubiquitin-protein ligase (or as a component of an E3 complex) that, characteristic of E3 ligase proteins, accepts ubiquitin (in the form of a thioester) from an E2 ubiquitin-conjugating enzyme (UBCH7) and transfers that ubiquitin residue to substrates targeted for degradation. Specifically, ARIH1 interacts with and polyubiquitylates eIF4E2, thereby targeting it for proteasomal degradation.

Immunogen: Synthetic peptide of human ARIH1

Applications: ELISA, IHC

Recommended Dilutions: IHC: 50-100; ELISA: 5000-10000

Host Species: Rabbit

Clonality: Rabbit Polyclonal

Isotype: Immunogen-specific rabbit IgG

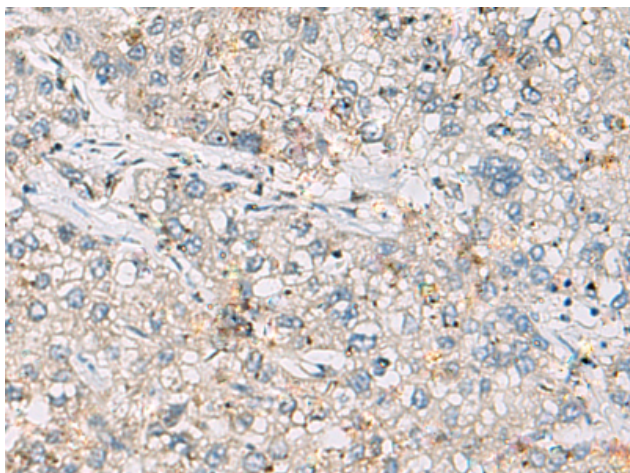
Purification: Antigen affinity purification

Species Reactivity: Human, Mouse

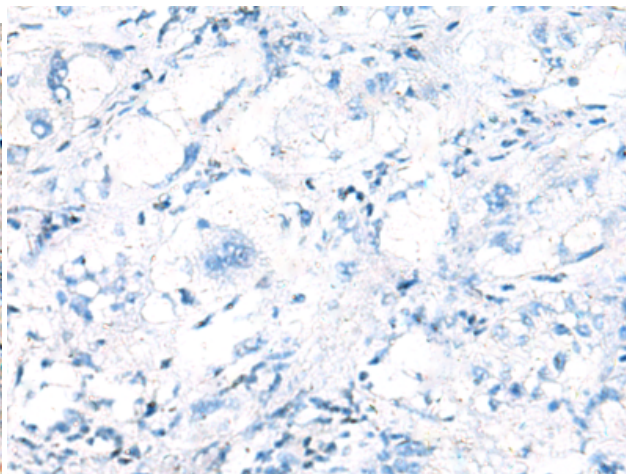
Constituents: PBS (without Mg²⁺ and Ca²⁺), pH 7.4, 150 mM NaCl, 0.05% Sodium Azide and 40% glycerol

Research Areas: Metabolism, Cell Biology

Storage & Shipping: Store at -20°C. Avoid repeated freezing and thawing



Immunohistochemistry analysis of paraffin embedded Human liver cancer tissue using 215541(ARIH1 Antibody) at a dilution of 1/30(Cytoplasm).



In comparison with the IHC on the left, the same paraffin-embedded Human liver cancer tissue is first treated with the synthetic peptide and then with 215541(Anti-ARIH1 Antibody) at dilution 1/30.



Product Description

Pioneering GTPase and Oncogene Product Development since 2010
