

## ARL17A/ARL17B RABBIT PAB

**Cat.#:** S218066

**Product Name:** Anti-ARL17A/ARL17B Rabbit Polyclonal Antibody

**Synonyms:** ARFIP2; ARL17P1; ARL17; ARL17A

**UNIPROT ID:** Q8IVW1 (Gene Accession - BC030570 )

**Background:** ARL17 (ADP-ribosylation factor-like protein 17), also known as ARFIP2 or ARL17P1, is a 177 amino acid member of the ARF protein family. In human, there are two genes which have been identified as ARL17A and ARL17B that code for identical proteins and colocalize at chromosomal position 17q21.31. ARL17 functions as an activator of the cholera toxin catalytic subunit, an ADP-ribosyltransferase. Localized to the Golgi apparatus, ARL17 may also be involved in the modulation of vesicle budding and uncoating within the Golgi. ARL17 is expressed as three isoforms produced by alternative splicing events. GTP-binding protein that functions as an allosteric activator of the cholera toxin catalytic subunit, an ADP-ribosyltransferase. Involved in protein trafficking; may modulate vesicle budding and uncoating within the Golgi apparatus (By similarity).

**Immunogen:** Fusion protein of human ARL17A/ARL17B

**Applications:** ELISA, IHC

**Recommended Dilutions:** IHC: 25-100; ELISA: 2000-5000

**Host Species:** Rabbit

**Clonality:** Rabbit Polyclonal

**Isotype:** Immunogen-specific rabbit IgG

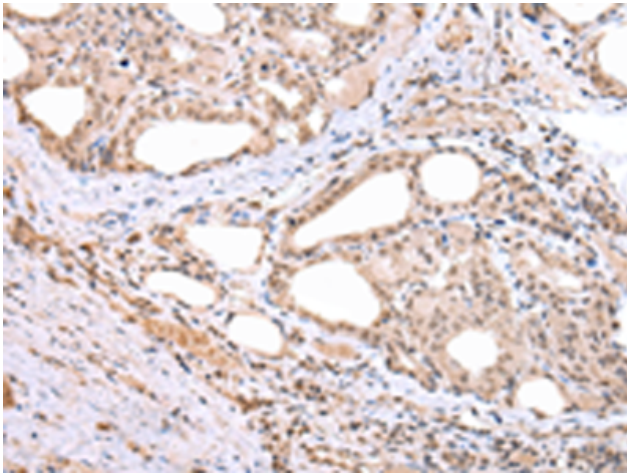
**Purification:** Antigen affinity purification

**Species Reactivity:** Human

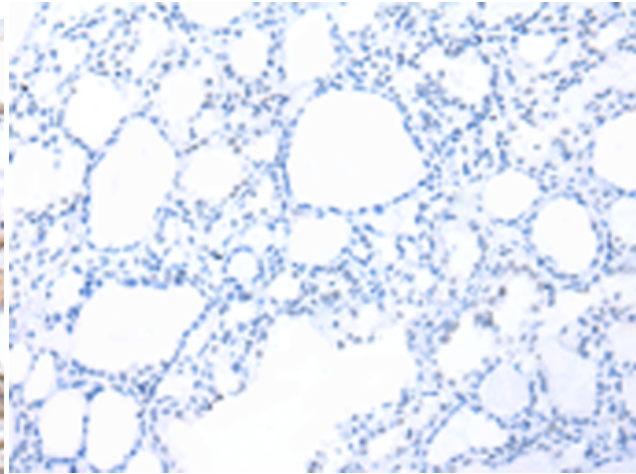
**Constituents:** PBS (without Mg<sup>2+</sup> and Ca<sup>2+</sup>), pH 7.4, 150 mM NaCl, 0.05% Sodium Azide and 40% glycerol

**Research Areas:** Signal Transduction

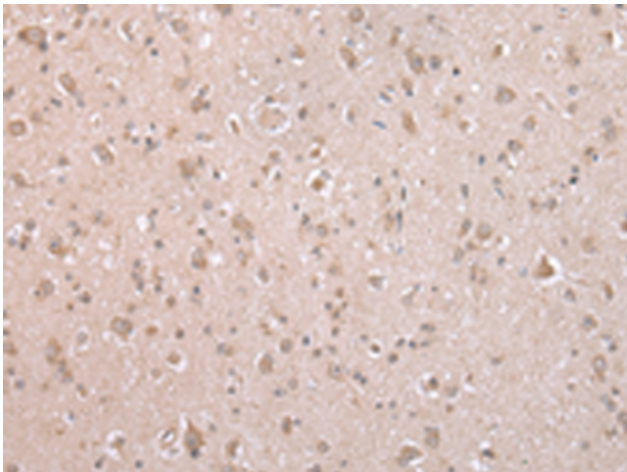
**Storage & Shipping:** Store at -20°C. Avoid repeated freezing and thawing



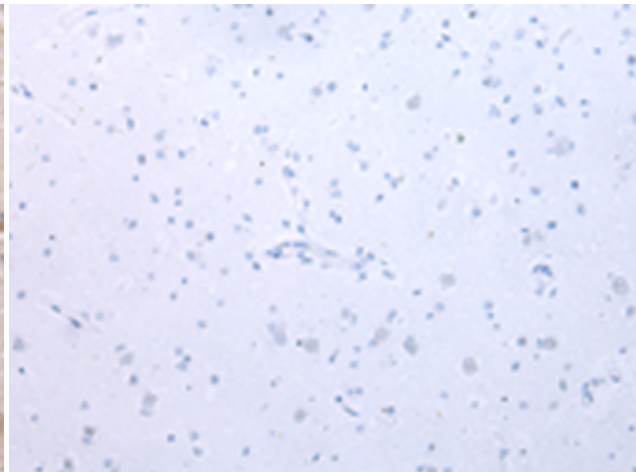
Immunohistochemistry analysis of paraffin embedded Human thyroid cancer tissue using 218066 (ARL17A/ARL17B Antibody) at a dilution of 1/20 (Cytoplasm and Nucleus).



In comparison with the IHC on the left, the same paraffin-embedded Human thyroid cancer tissue is first treated with the fusion protein and then with 218066 (Anti-ARL17A/ARL17B Antibody) at dilution 1/20.



The image on the left is immunohistochemistry of paraffin-embedded Human brain tissue using 218066 (Anti-ARL17A/ARL17B Antibody) at a dilution of 1/20.



In comparison with the IHC on the left, the same paraffin-embedded Human brain tissue is first treated with fusion protein and then with D223646 (Anti-ARL17A/ARL17B Antibody) at dilution 1/20.