

## ARL8A RABBIT PAB

**Cat.#:** S217045

**Product Name:** Anti-ARL8A Rabbit Polyclonal Antibody

**Synonyms:** GIE2; ARL10B

**UNIPROT ID:** Q96BM9 (Gene Accession - BC015408 )

**Background:** Enables GTP binding activity. Predicted to be involved in chromosome segregation. Located in cytoplasm; midbody; and spindle midzone. [provided by Alliance of Genome Resources, Apr 2022]

**Immunogen:** Fusion protein of human ARL8A

**Applications:** ELISA, IHC

**Recommended Dilutions:** IHC: 50-200; ELISA: 5000-10000

**Host Species:** Rabbit

**Clonality:** Rabbit Polyclonal

**Isotype:** Immunogen-specific rabbit IgG

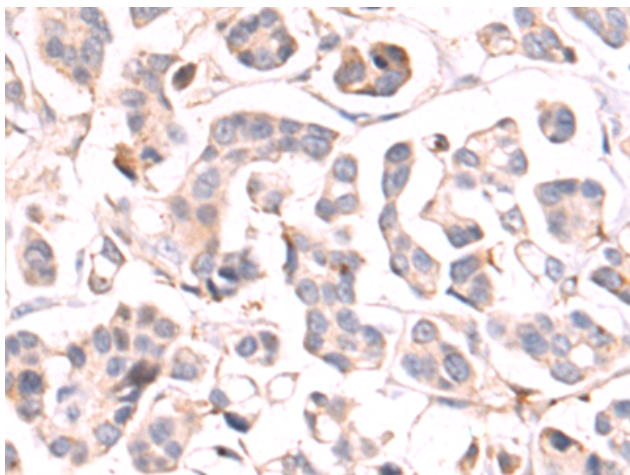
**Purification:** Antigen affinity purification

**Species Reactivity:** Human, Mouse

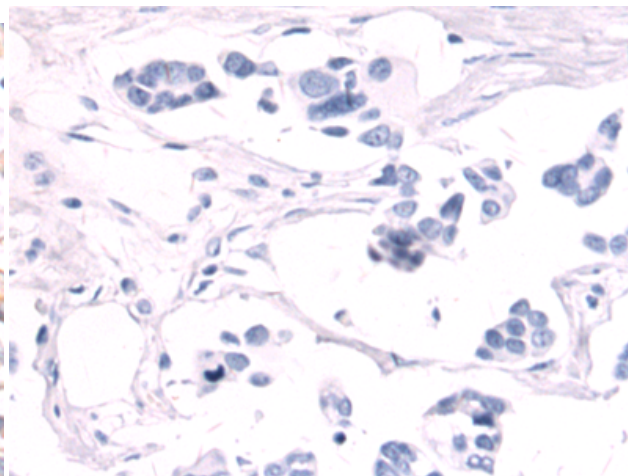
**Constituents:** PBS (without Mg<sup>2+</sup> and Ca<sup>2+</sup>), pH 7.4, 150 mM NaCl, 0.05% Sodium Azide and 40% glycerol

**Research Areas:** Signal Transduction

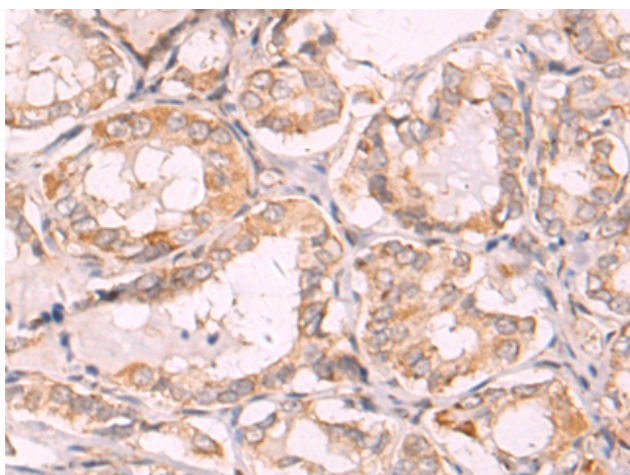
**Storage & Shipping:** Store at -20°C. Avoid repeated freezing and thawing



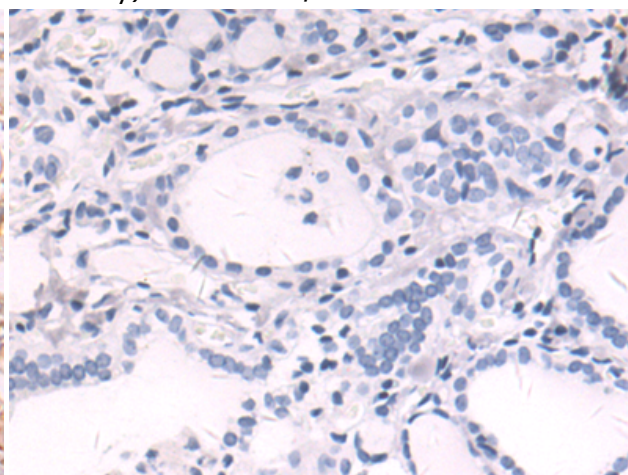
Immunohistochemistry analysis of paraffin embedded Human colorectal cancer tissue using 217045(ARL8A Antibody) at a dilution of 1/80(Cytoplasm).



In comparison with the IHC on the left, the same paraffin-embedded Human colorectal cancer tissue is first treated with the fusion protein and then with 217045(Anti-ARL8A Antibody) at dilution 1/80.



The image on the left is immunohistochemistry of paraffin-embedded Human thyroid cancer tissue using 217045(Anti-ARL8A Antibody) at a dilution of 1/80.



In comparison with the IHC on the left, the same paraffin-embedded Human thyroid cancer tissue is first treated with fusion protein and then with D221699(Anti-ARL8A Antibody) at dilution 1/80.