

ARMT1 RABBIT PAB

Cat.#: S219391

Product Name: Anti-ARMT1 Rabbit Polyclonal Antibody

Synonyms: C6orf211

UNIPROT ID: Q9H993 (Gene Accession - BC011348)

Background: O-methyltransferase that methylates glutamate residues of target proteins to form gamma-glutamyl methyl ester residues. Methylates PCNA, suggesting it is involved in the DNA damage response.

Immunogen: Fusion protein of human ARMT1

Applications: ELISA, IHC

Recommended Dilutions: IHC: 200-300; ELISA: 5000-10000

Host Species: Rabbit

Clonality: Rabbit Polyclonal

Isotype: Immunogen-specific rabbit IgG

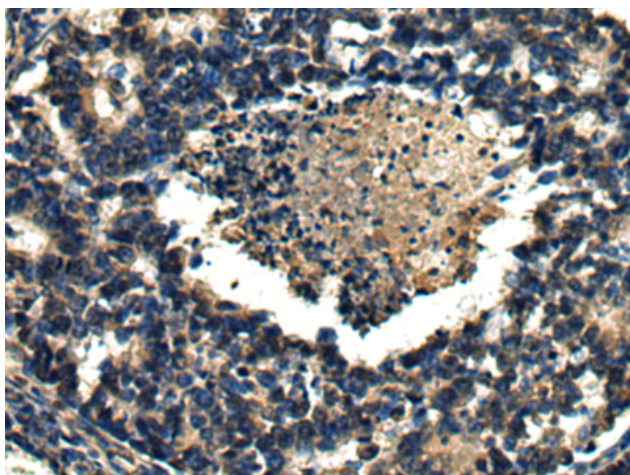
Purification: Antigen affinity purification

Species Reactivity: Human

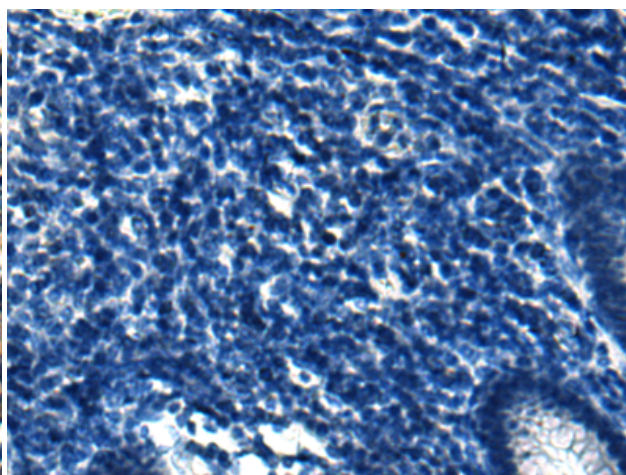
Constituents: PBS (without Mg²⁺ and Ca²⁺), pH 7.4, 150 mM NaCl, 0.05% Sodium Azide and 40% glycerol

Research Areas: Cell Biology

Storage & Shipping: Store at -20°C. Avoid repeated freezing and thawing



Immunohistochemistry analysis of paraffin embedded Human colorectal cancer tissue using 219391 (ARMT1 Antibody) at a dilution of 1/180 (Cytoplasm).



In comparison with the IHC on the left, the same paraffin-embedded Human colorectal cancer tissue is first treated with the fusion protein and then with 219391 (Anti-ARMT1 Antibody) at dilution 1/180.