

ARPC4 RABBIT PAB

Cat.#: S220063

Product Name: Anti-ARPC4 Rabbit Polyclonal Antibody

Synonyms: ARC20; P20-ARC

UNIPROT ID: P59998 (Gene Accession - NP_005709)

Background: This gene encodes one of seven subunits of the human Arp2/3 protein complex. This complex controls actin polymerization in cells and has been conserved throughout eukaryotic evolution. This gene encodes the p20 subunit, which is necessary for actin nucleation and high-affinity binding to F-actin. Alternative splicing results in multiple transcript variants. Naturally occurring read-through transcription exists between this gene and the downstream tubulin tyrosine ligase-like family, member 3 (TLL3), which results in the production of a fusion protein.

Immunogen: Synthetic peptide of human ARPC4

Applications: ELISA, WB, IHC

Recommended Dilutions: IHC: 50-200;WB: 500-2000;ELISA: 5000-10000

Host Species: Rabbit

Clonality: Rabbit Polyclonal

Isotype: Immunogen-specific rabbit IgG

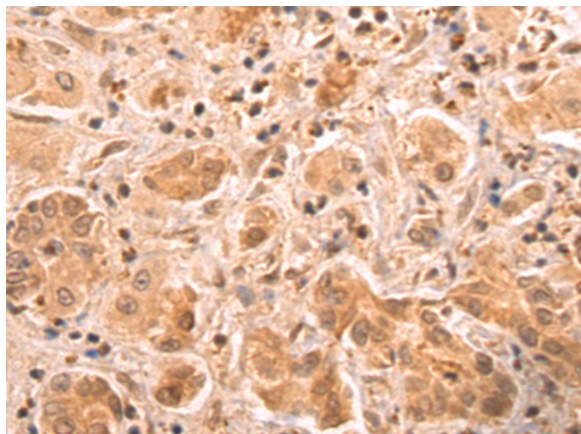
Purification: Antigen affinity purification

Species Reactivity: Human, Mouse

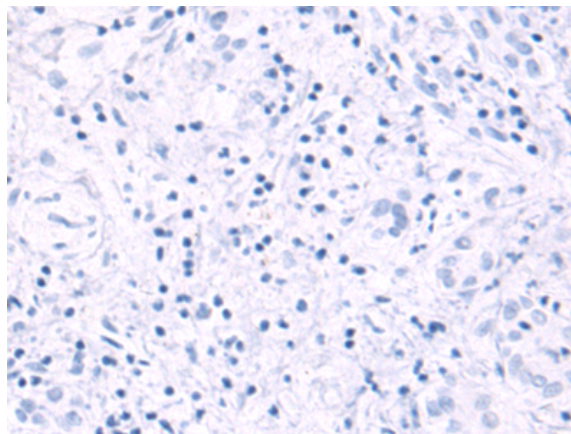
Constituents: PBS (without Mg²⁺ and Ca²⁺), pH 7.4, 150 mM NaCl, 0.05% Sodium Azide and 40% glycerol

Research Areas: Signal Transduction

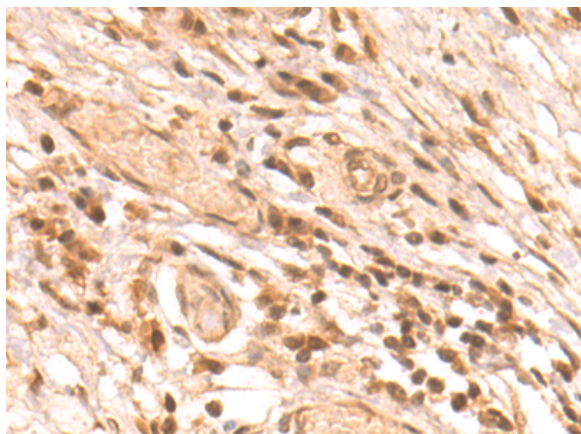
Storage & Shipping: Store at -20°C. Avoid repeated freezing and thawing



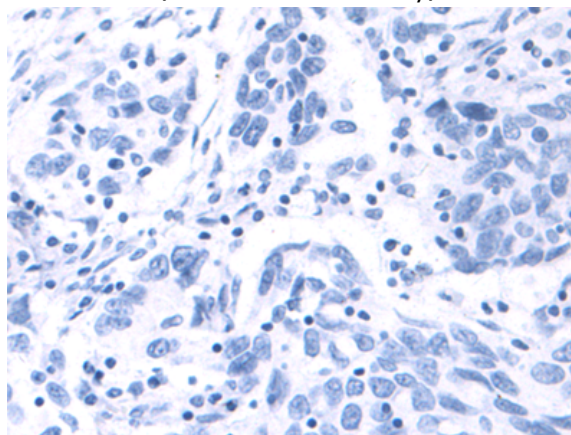
Immunohistochemistry analysis of paraffin embedded Human liver cancer tissue using 220063(ARPC4 Antibody) at a dilution of 1/50(Cytoplasm and Nucleus).



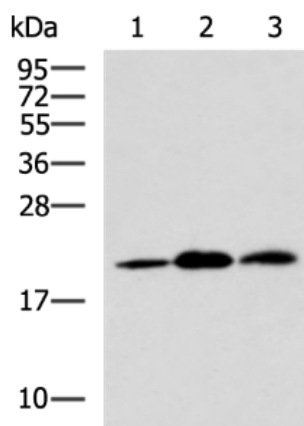
In comparison with the IHC on the left, the same paraffin-embedded Human liver cancer tissue is first treated with the synthetic peptide and then with 220063(Anti-ARPC4 Antibody) at dilution 1/50.



The image on the left is immunohistochemistry of paraffin-embedded Human colorectal cancer tissue using 220063(Anti-ARPC4 Antibody) at a dilution of 1/50.



In comparison with the IHC on the left, the same paraffin-embedded Human colorectal cancer tissue is first treated with synthetic peptide and then with D260892(Anti-ARPC4 Antibody) at dilution 1/50.



Gel: 12%SDS-PAGE, Lysate: 40 µg;
 Lane 1-3: NIH/3T3 cell, Mouse brain tissue, Mouse thymus tissue lysates;
 Primary antibody: 220063(ARPC4 Antibody) at dilution 1/550;
 Secondary antibody: HRP-conjugated Goat anti rabbit IgG at 1/5000 dilution;
 Exposure time: 40 seconds



Product Description

Pioneering GTPase and Oncogene Product Development since 2010
