

AS160 RABBIT MAB

Cat.#: N261876

Product Name: Anti-AS160 Rabbit Monoclonal Antibody

Synonyms: AS160; NIDDM5

UNIPROT ID: O60343

Background: May act as a GTPase-activating protein for RAB2A, RAB8A, RAB10 and RAB14. Isoform 2 promotes insulin-induced glucose transporter SLC2A4/GLUT4 translocation at the plasma membrane, thus increasing glucose uptake.

Immunogen: Recombinant protein of human AS160

Applications: WB,IP

Recommended Dilutions: WB: 1/500-1/1000 IP: 1/20

Host Species: Rabbit

Clonality: Rabbit Monoclonal

Clone ID: R07-3H7

MW: Calculated MW: 147 kDa; Observed MW: 160 kDa

Isotype: IgG

Purification: Affinity Purified

Species Reactivity: Human

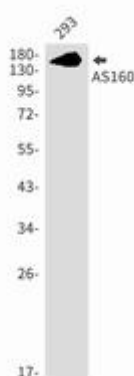
Conjugation: Unconjugated

Modification: Unmodified

Constituents: PBS (without Mg²⁺ and Ca²⁺), pH 7.3 containing 50% glycerol, 0.5% BSA and 0.02% sodium azide

Research Areas: Signal Transduction

Storage & Shipping: Store at -20°C. Avoid repeated freezing and thawing



Western blot analysis of AS160 in 293 lysates using AS160 antibody.



Product Description

Pioneering GTPase and Oncogene Product Development since 2010
