

ASAH3L RABBIT PAB

Cat.#: N225046

Product Name: Anti-ASAH3L Rabbit pAb

Synonyms: ACER2; ASAH3L; PPI1646; Alkaline ceramidase 2; AlkCDase 2; Alkaline CDase 2; haCER2; Acylsphingosine deacylase 3-like; N-acylsphingosine amidohydrolase 3-like

UNIPROT ID: Q5QJU3

Background: Golgi ceramidase that catalyzes the hydrolysis of ceramides into sphingoid bases like sphingosine and free fatty acids at alkaline pH.

Immunogen: Synthesized peptide derived from ASAH3L . at AA range: 50-130

Applications: WB,IHC-P,ELISA

Recommended Dilutions: WB: 1/500-1/1000 IHC: 1/50-1/100 ELISA: 1/10000

Host Species: Rabbit

Clonality: Rabbit Polyclonal

Clone ID: -

MW: Calculated MW: 31 kDa; Observed MW: 31 kDa

Isotype: IgG

Purification: Affinity Purified

Species Reactivity: Human,Mouse

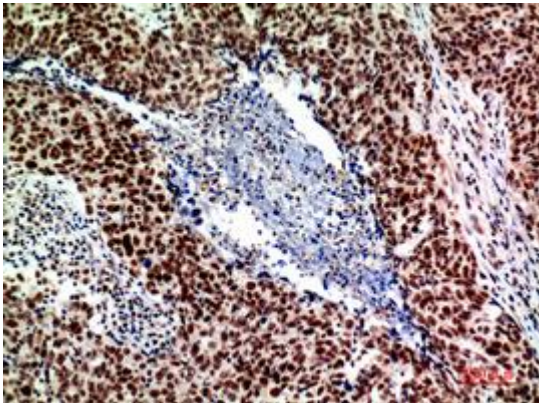
Conjugation: Unconjugated

Modification: Unmodified

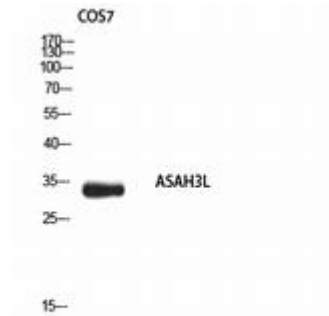
Constituents: PBS (without Mg²⁺ and Ca²⁺), pH 7.3 containing 50% glycerol, 0.5% BSA and 0.02% sodium azide

Research Areas: Signal Transduction

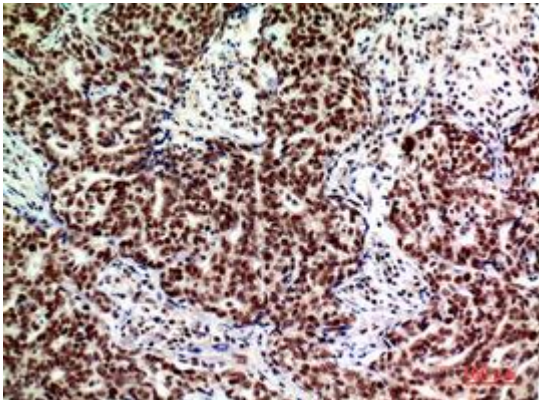
Storage & Shipping: Store at -20°C. Avoid repeated freezing and thawing



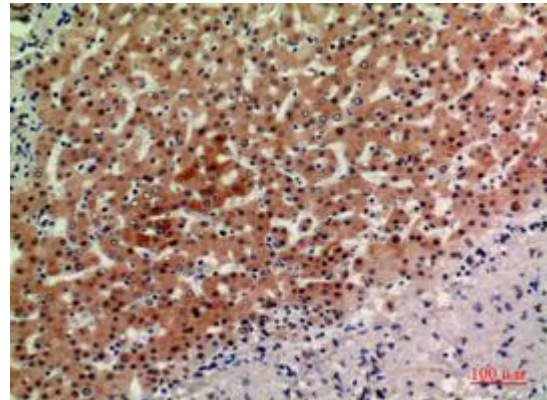
Immunohistochemistry analysis of paraffin-embedded Human breastcancer using ASA3L antibody. High-pressure and temperature Sodium Citrate pH 6.0 was used for antigen retrieval.



Western blot analysis of ASA3L in COS7 lysates using ASA3L antibody.



Immunohistochemistry analysis of paraffin-embedded Human breastcancer using ASA3L antibody. High-pressure and temperature Sodium Citrate pH 6.0 was used for antigen retrieval.



Immunohistochemistry analysis of paraffin-embedded Human liver using ASA3L antibody. High-pressure and temperature Sodium Citrate pH 6.0 was used for antigen retrieval.